



Florian Kraxner  
Sylvain Leduc  
Sabine Fuss  
Franziska  
Albrecht et al...

# Roundtable Discussion

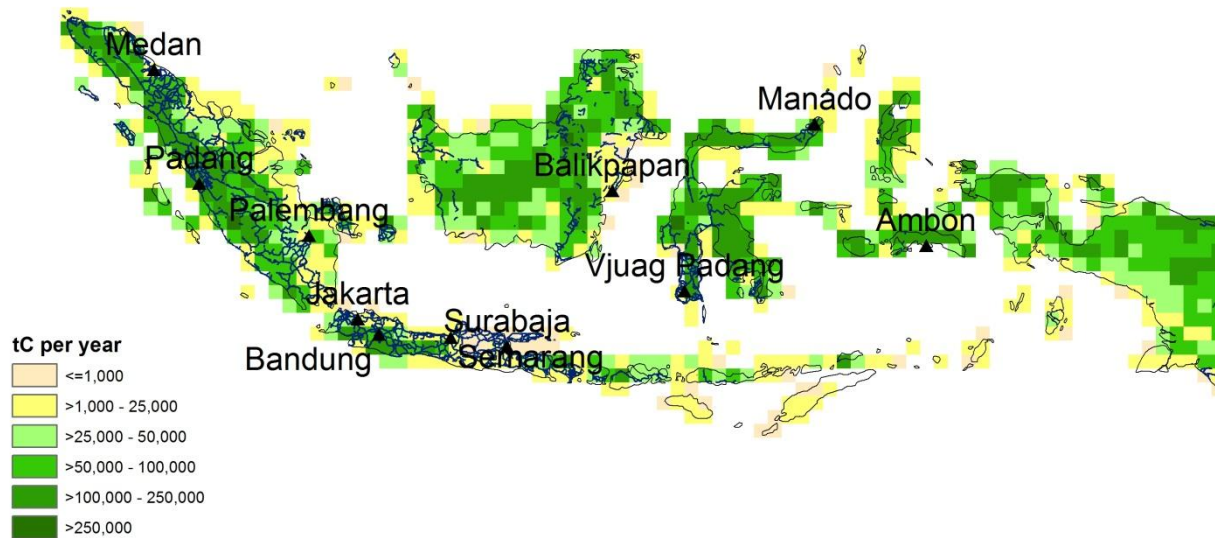
## Synthesizing Bioenergy and CCS – Towards A Systems Approach to Harnessing Benefits

Dialogue question:

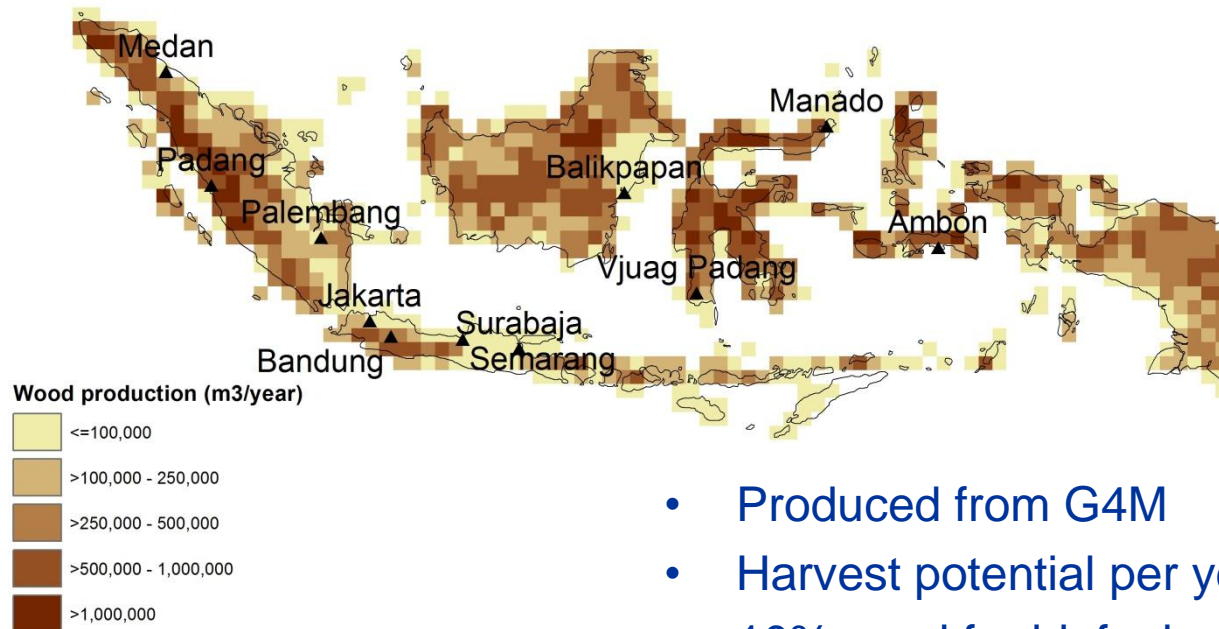
What steps are taken to address two scenarios?

- BECCS is deployed
- BECCS is not deployed

# Biomass

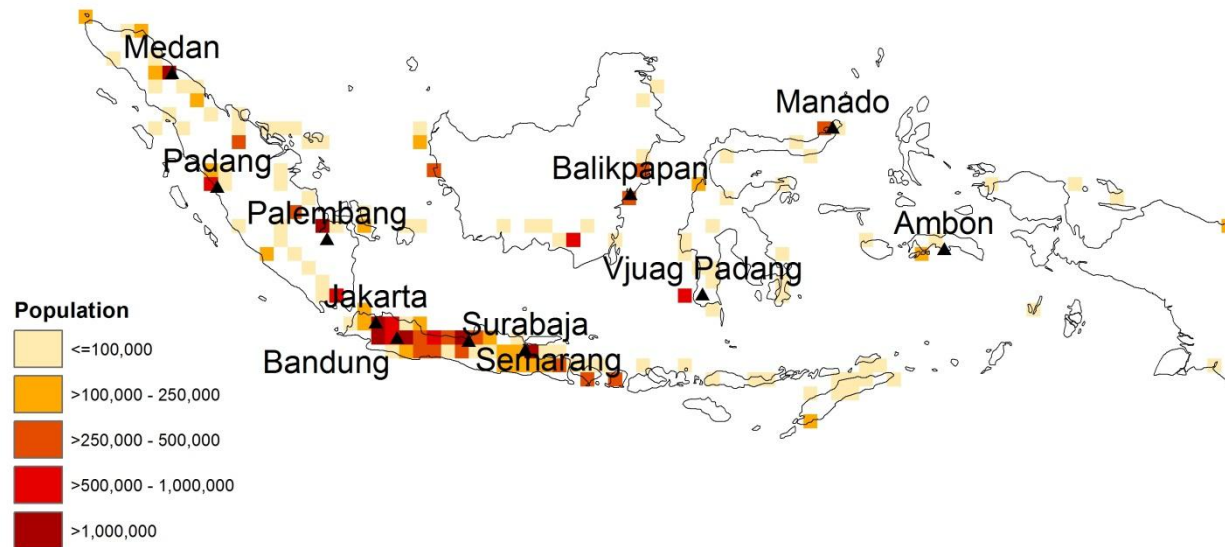


# Managed Forest

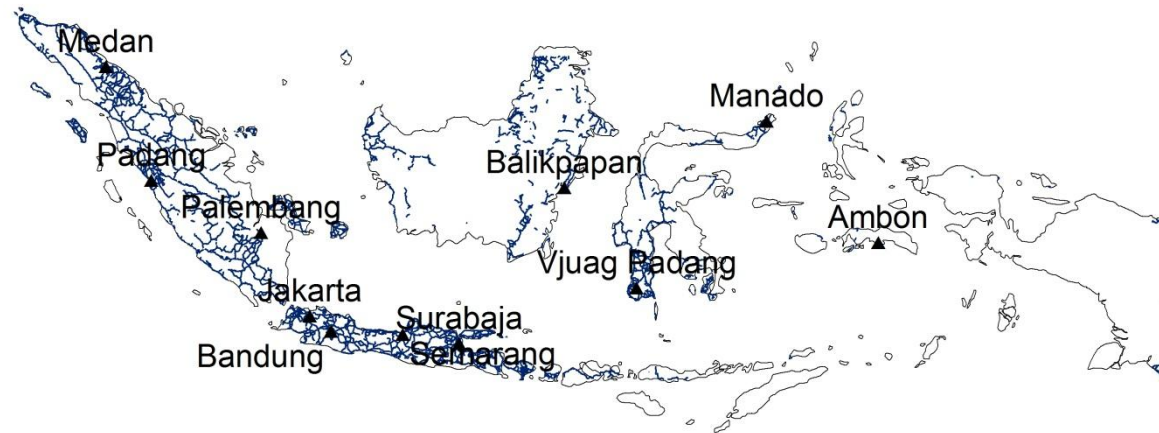


- Produced from G4M
- Harvest potential per year
- 10% used for biofuel production

# Population



# Road Network



# Preliminary Results

## – optimal siting and scaling of bioenergy plants

- Methanol production
  - Highest biofuel efficiency (55% energy content)
- Plant capacity: 650,000 t wood/year
- Total biofuel output: ~79,000 toe/year



### Calculation of substitution potential:

$$\text{Seq. Potential} = 650,000 \text{ t wood per yr} * [n \text{ of optimal BECCS plants}] * 1.122 \text{ tCO}_2 \text{ per T wood}$$

# Potential “in-situ” BECCS locations

CO<sub>2</sub> Storage Capacity Estimates in Depleted Oil and Gas Field\*

