



Secure • Sustainable • Together

# **IEA Workshop on Accelerating Energy Efficiency in SMEs**

**27 November**

**WIFI Access**

**USERNAME: DELEGATE**  
**PASSWORD: meetings**

# Why a Policy Pathway on SMEs?

## 1. Across sectors

- 1.1 Measures for increasing investment in energy efficiency;
- 1.2 National energy efficiency strategies and goals;
- 1.3 Compliance, monitoring, enforcement and evaluation of energy efficiency measures;
- 1.4 Energy efficiency indicators;
- 1.5 Monitoring and reporting progress with the IEA energy efficiency recommendations themselves.

## 2. Buildings

- 2.1 Building codes for new buildings;
- 2.2 Passive Energy Houses and Zero Energy Buildings;
- 2.3 Policy packages to promote energy efficiency in existing buildings;
- 2.4 Building certification schemes;
- 2.5 Energy efficiency improvements in glazed areas.

## 3. Appliances

- 3.1 Mandatory energy performance requirements or labels;
- 3.2 Low-power modes, including standby power, for electronic and networked equipment;
- 3.3 Televisions and “set-top” boxes;
- 3.4 Energy performance test standards and measurement protocols.

## 4. Lighting

- 4.1 Best practice lighting and the phase-out of incandescent bulbs;
- 4.2 Ensuring least-cost lighting in non-residential buildings and the phase-out of inefficient fuel-based lighting.

## 5. Transport

- 5.1 Fuel-efficient tyres;
- 5.2 Mandatory fuel efficiency standards for light-duty vehicles;
- 5.3 Fuel economy of heavy-duty vehicles;
- 5.4 Eco-driving.

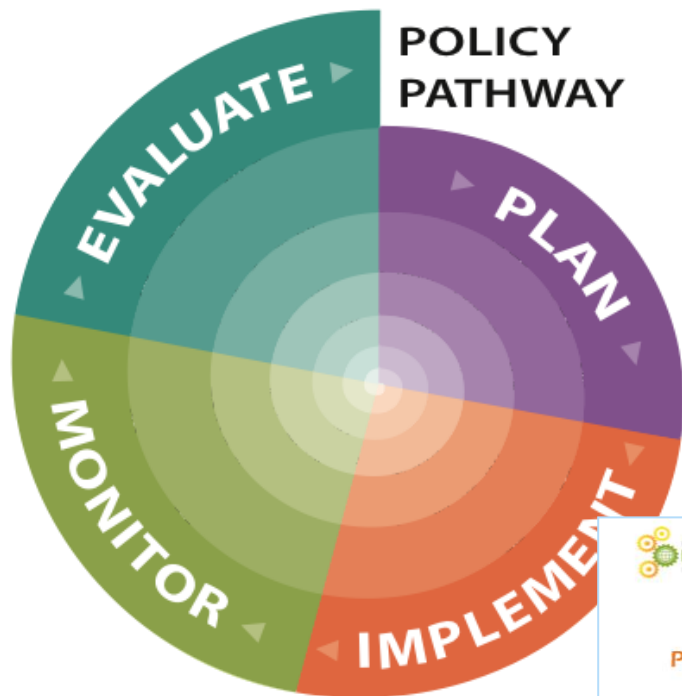
## 6. Industry

- 6.1 Collection of high quality energy efficiency data for industry;
- 6.2 Energy performance of electric motors;
- 6.3 Assistance in developing energy management capability;
- 6.4 Policy packages to promote energy efficiency in small and medium-sized enterprises.

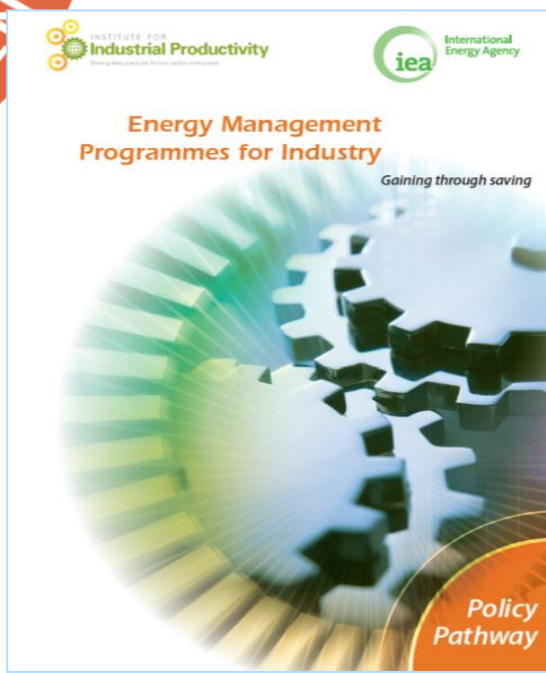
## 7. Utilities

- 7.1 Utility end-use energy efficiency schemes.

# What are IEA Policy Pathways?



- Actionable guidance for governments and other stakeholders to implement energy efficiency programmes effectively
- Examples, case studies, extracts from evaluations, success factors, lessons learned

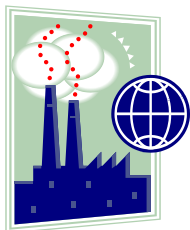


# We are still looking for...

- How to calculate potentials



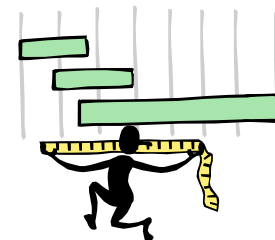
- Assessments of the energy use of the global (or even country level) SME sector



- Ways of adequately measuring cost efficiency



- Assessment metrics & success factors



- How to scale up programmes

- And your unique perspectives and ideas



# Our goal today

**Session 1: The business case for SME energy efficiency programmes**

**Session 2: What are effective policy combinations and packages?**

**Session 3: Roles of different stakeholders and how to work together**

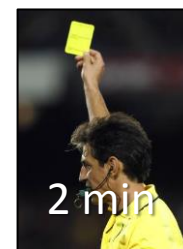
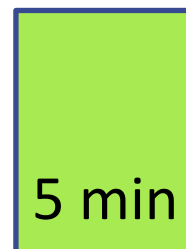
**Session 4: How do we get everything into a policy pathway and what next**





# Practical issues

- What to do in the case of emergency
- Facilities
- Release form
- Presentations on IEA website
- Audio recording
- Coffee breaks
- Lunch
- Time management
- Making interventions
- What happens after the workshop?



# What happens after the workshop?

Drafting a document that can be useful to all the different kinds of SMEs everywhere is a bit difficult. Sometimes things get rough...

We really appreciate the work that you are doing by contributing to the Policy Pathway, and we know it's not easy.

This is why we're giving you an SME-free holiday season, and asking for your responses by **December 5<sup>th</sup>**!



[http://cramer-institute.com/TheSandbox/images/FightCloud\\_000.jpg](http://cramer-institute.com/TheSandbox/images/FightCloud_000.jpg)