

DATA COLLECTION IN STATE GOVERNMENT OPERATIONS

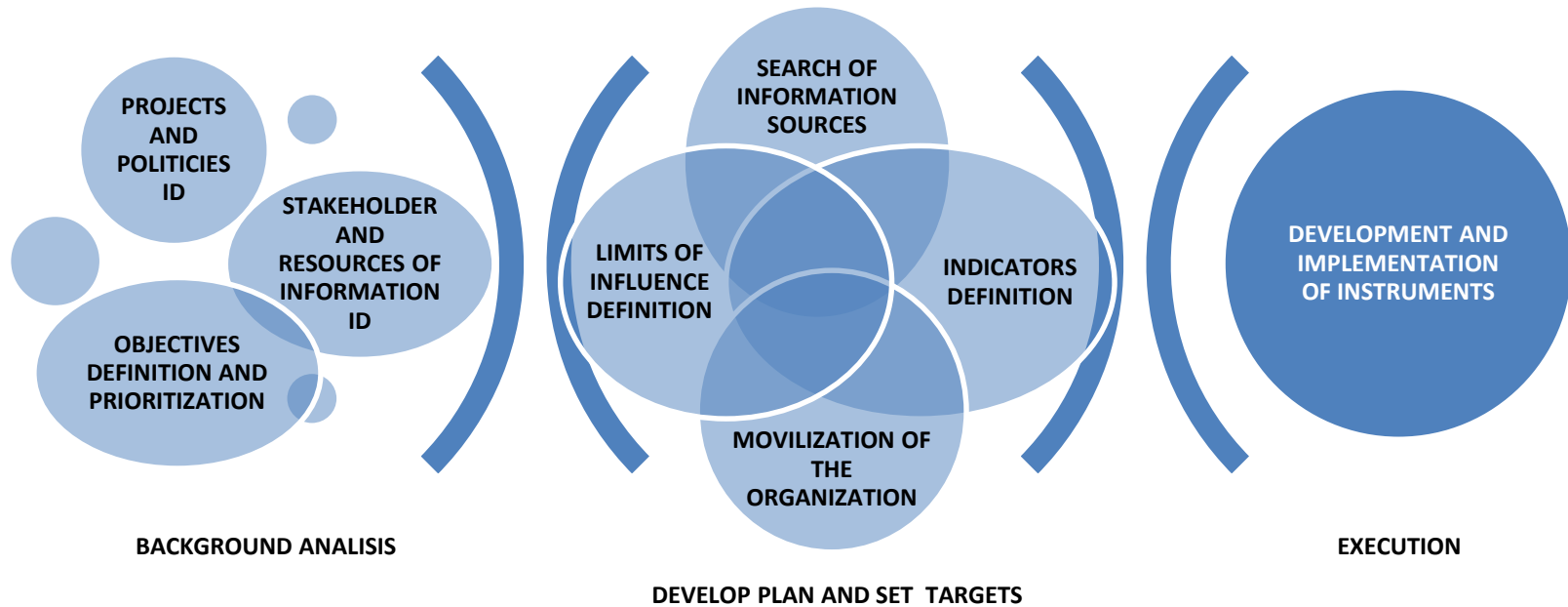
M.I. Jorge Alejandro Monreal Cruz
State Government of Morelos.

OBJECTIVES

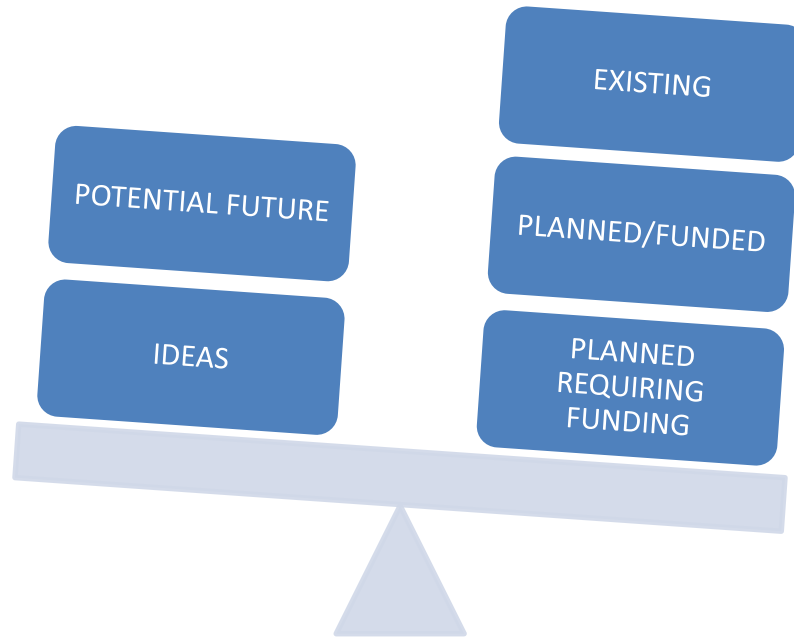
DEVELOPMENT OF PUBLIC POLICIES AND PROJECTS .

- DIAGNOSIS OF THE SITUATION.
- EVALUATION .
- BARRIERS AND OPORTUNITIES ID.
- UNCERTAINTY RESOURCES OF INDICATORS MAPPING
- ADJUSTMENT AND IMPROVEMENT OF TRACEABILITY, TRANSPARENCY AND CERTAINTY
- REGULATION AND MONITORING

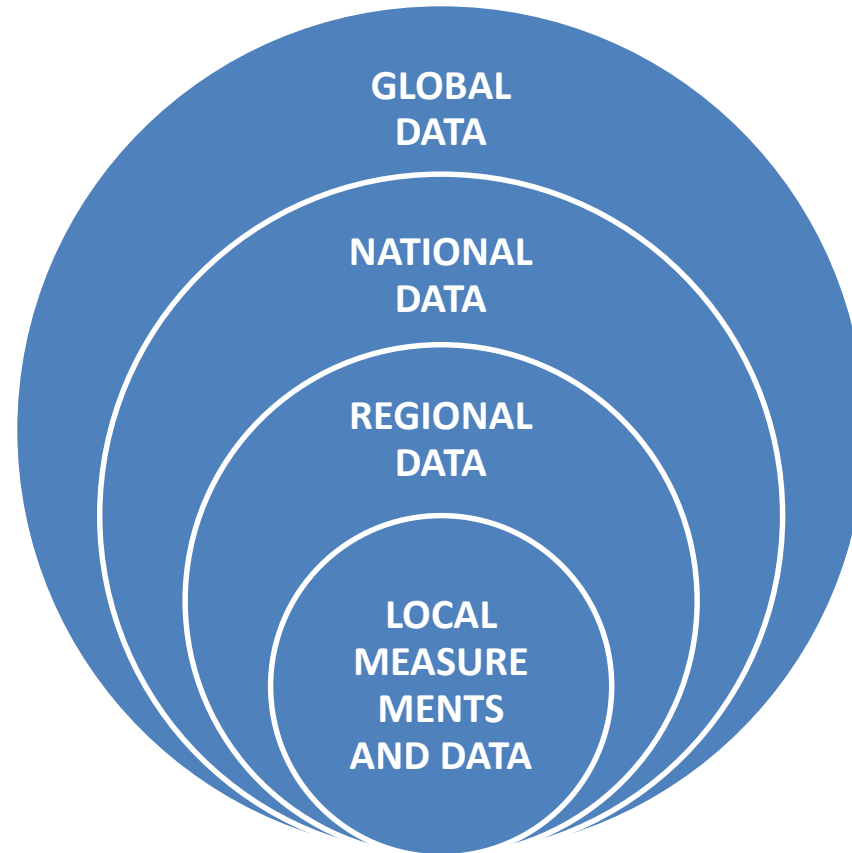
Methodology



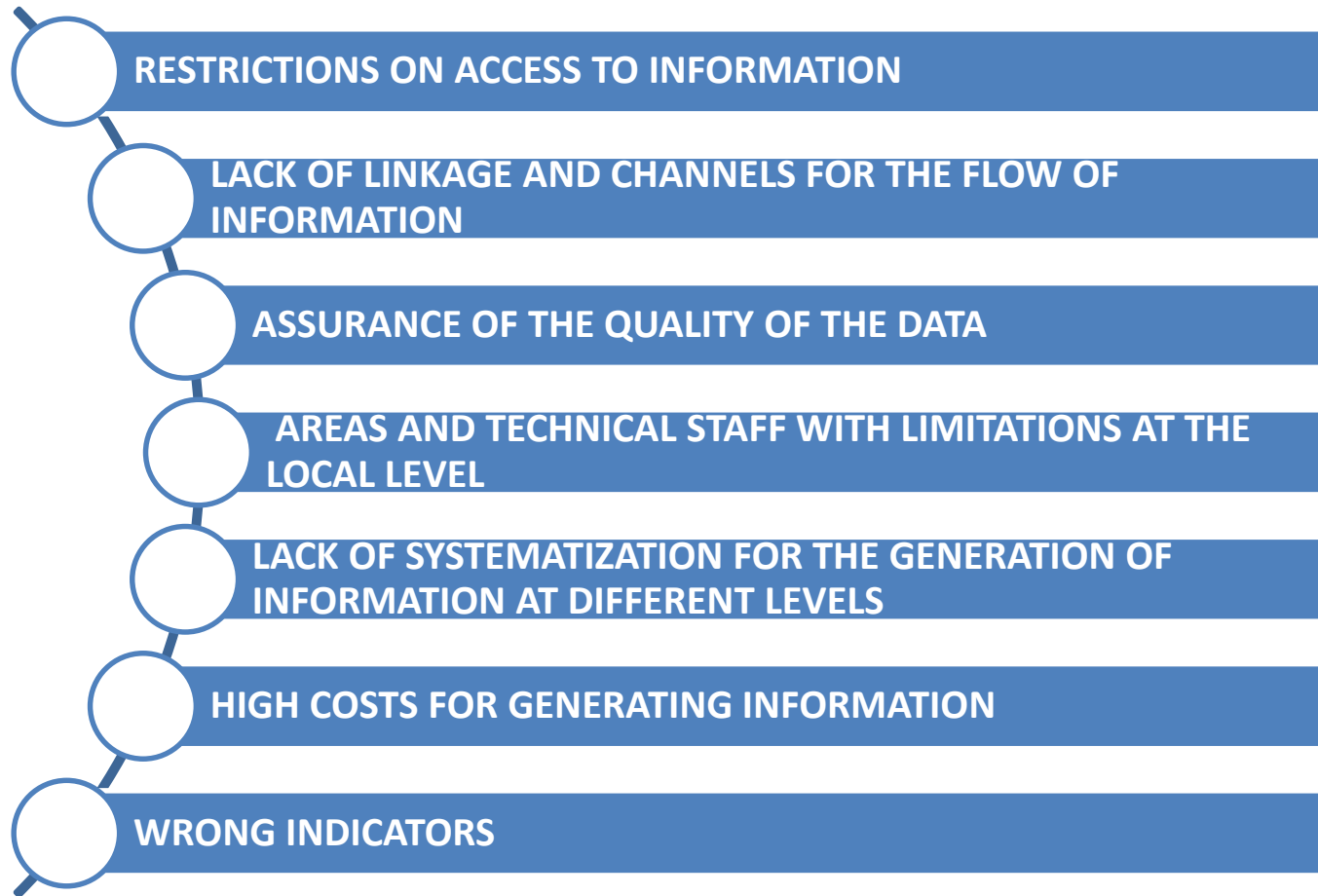
POLICIES AND PROJECTS



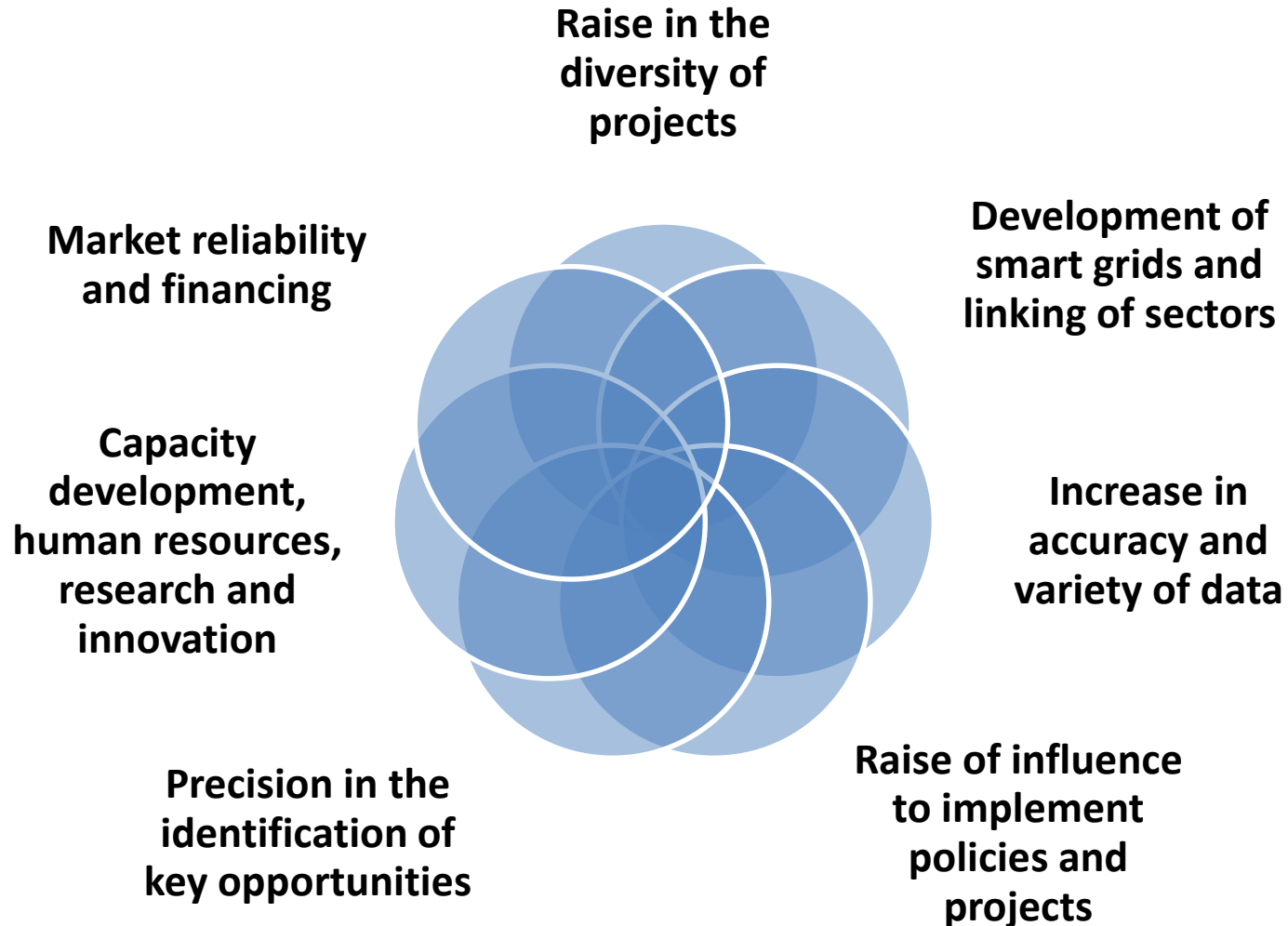
Search and Tracking



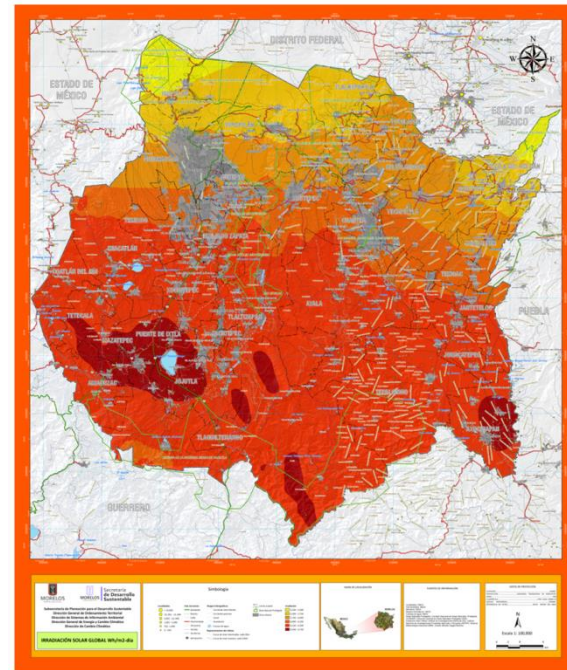
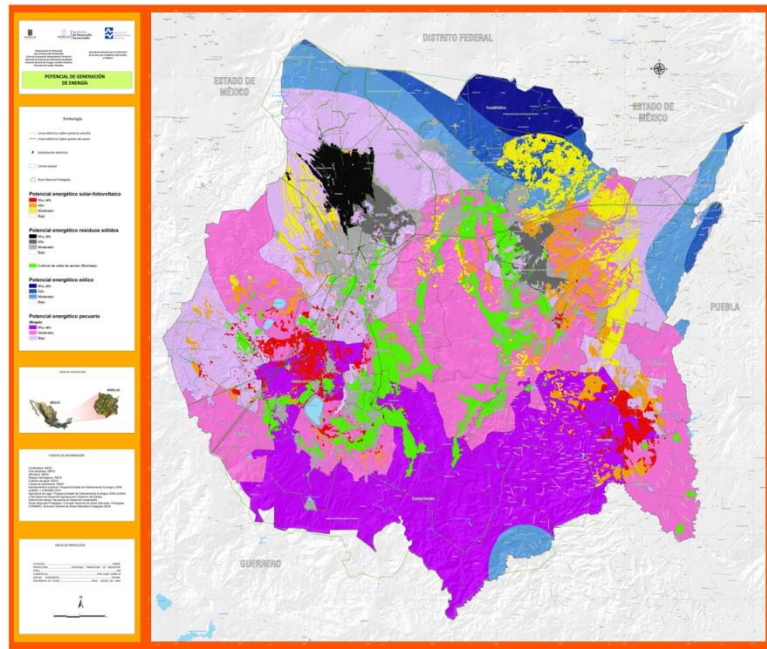
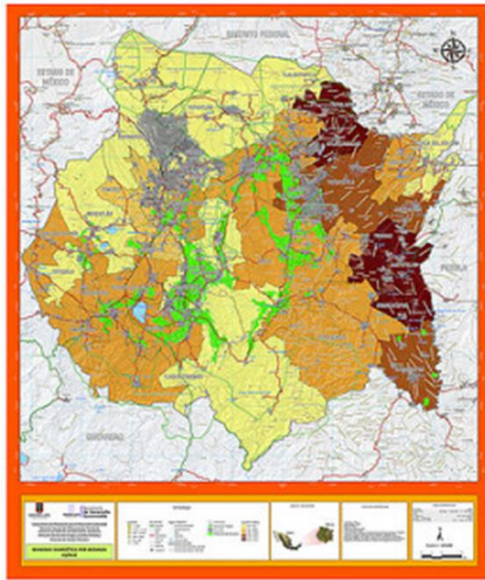
BARRIERS

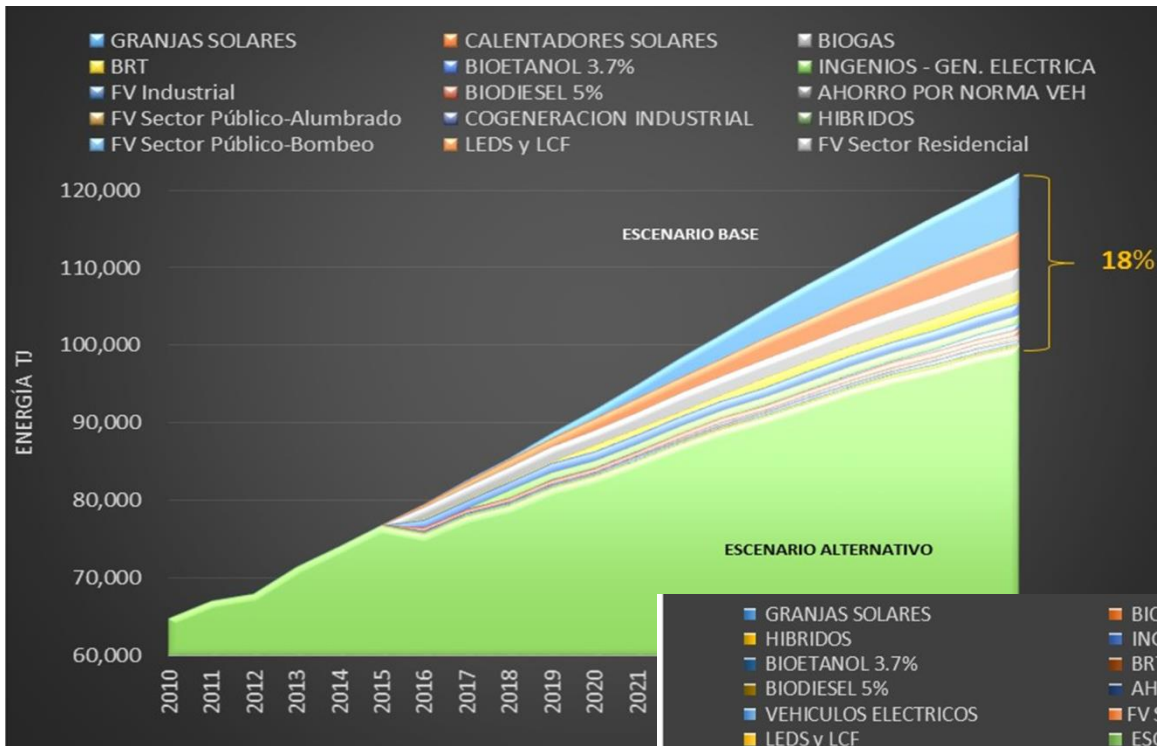


OPPORTUNITY AREAS

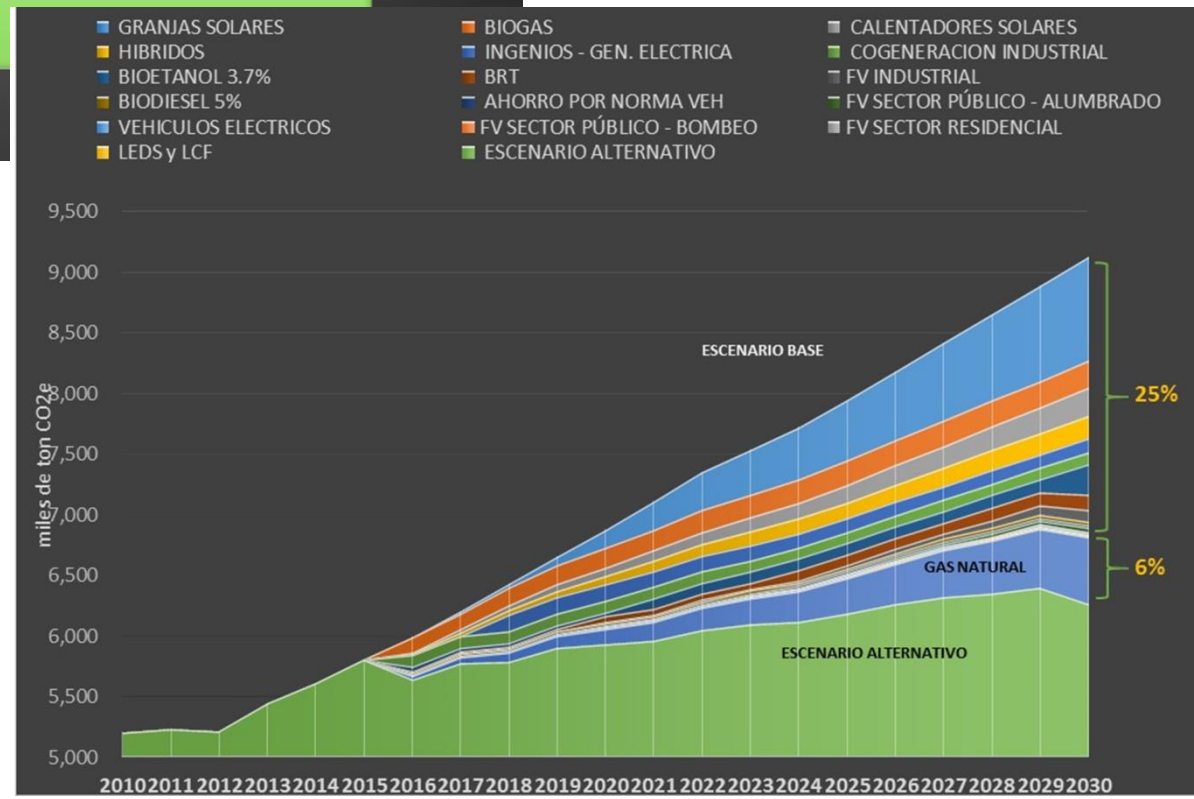


EVALUATION OF POTENTIAL OF RENEWABLES ENERGY RESOURCES



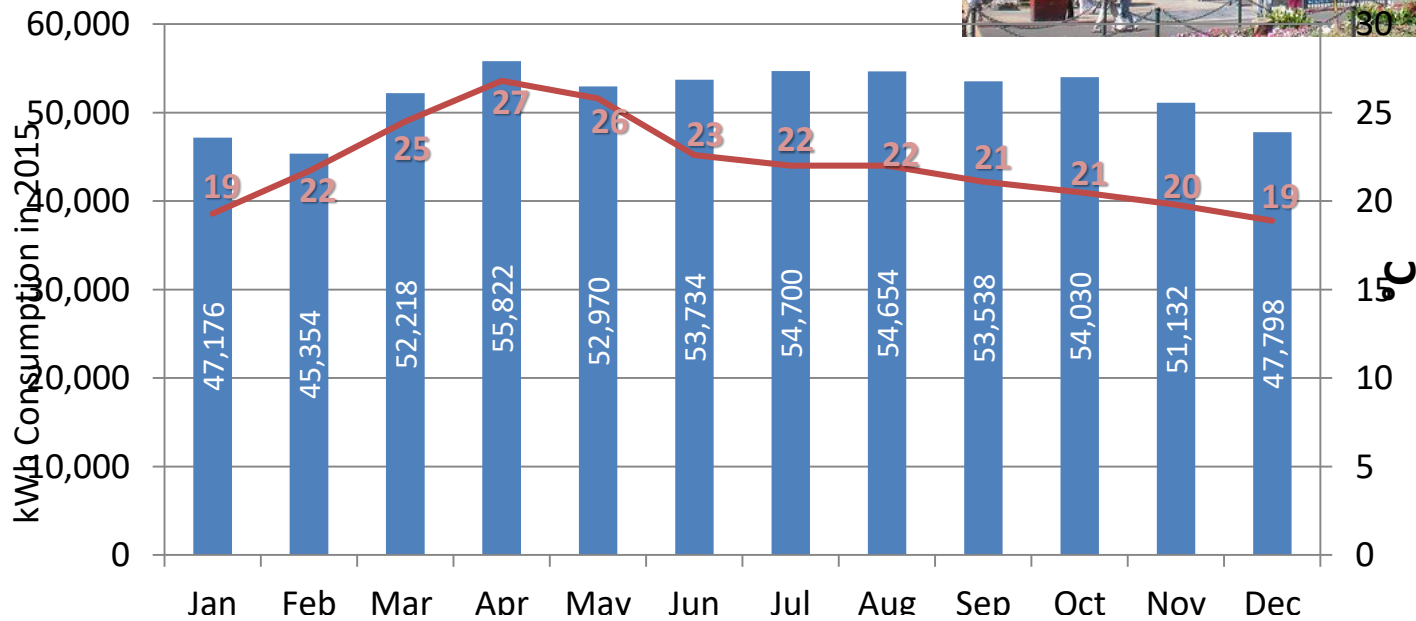


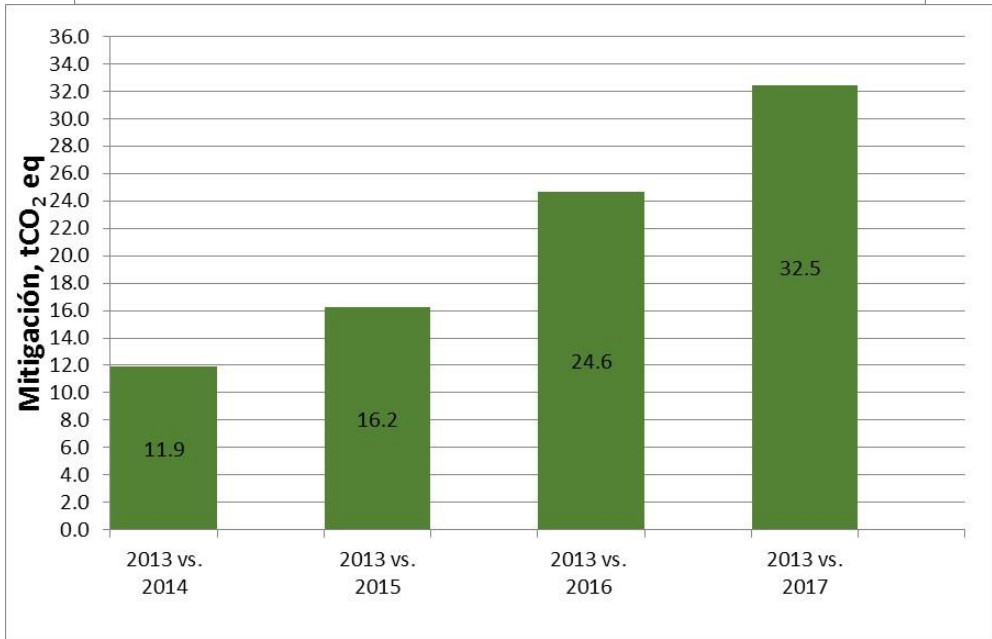
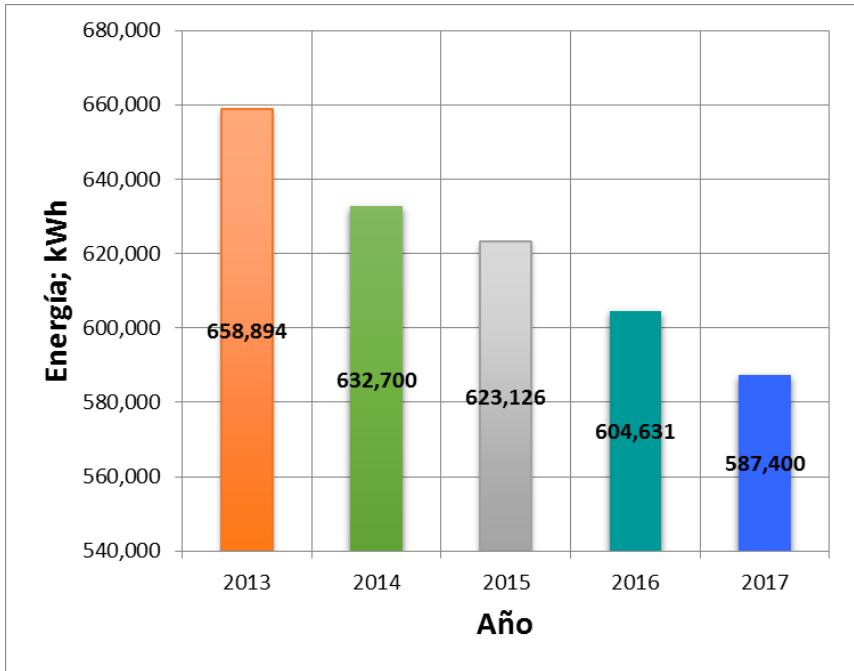
STATE STRATEGY FOR THE SUSTAINABLE USE OF ENERGY



EXAMPLES OF GENERATION DATA MORELOS

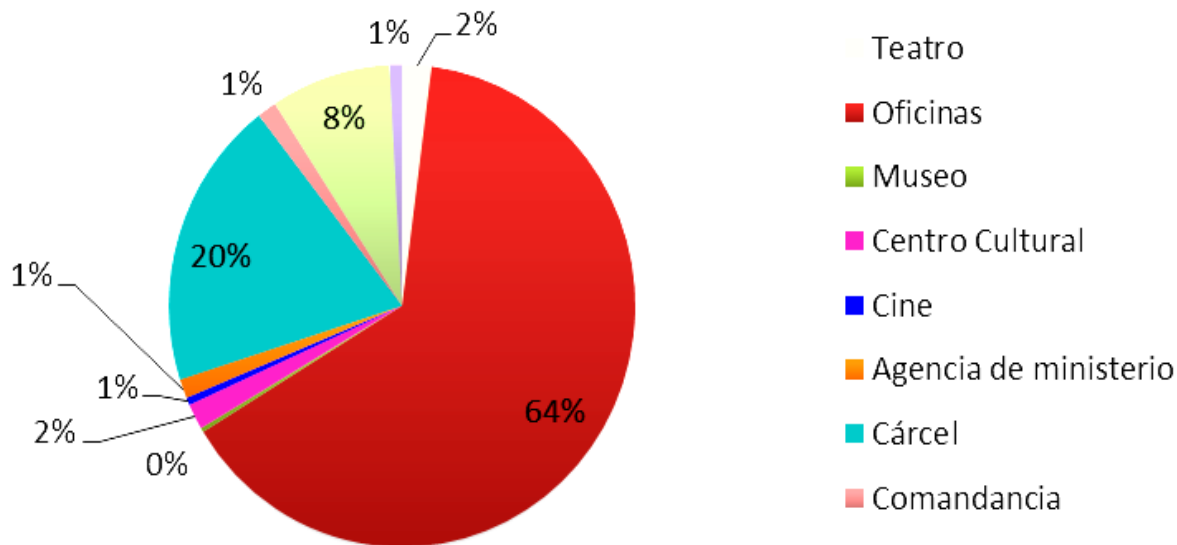
ENERGY MANAGEMENT SYSTEM (BUILDINGS)



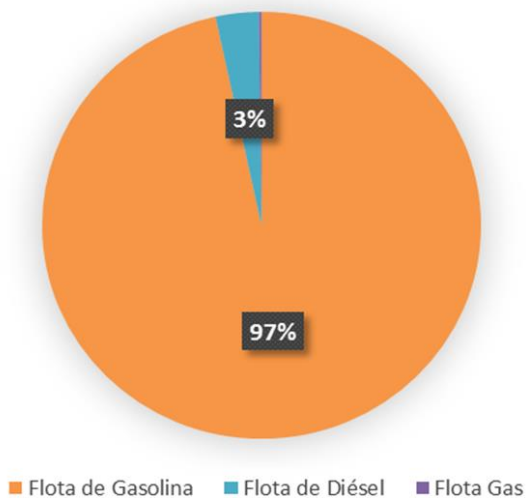


GOVERNMENT CARBON MANAGEMENT PLAN

Costo relacionado a las emisiones de carbono derivadas del consumo de energía por tipo de edificio

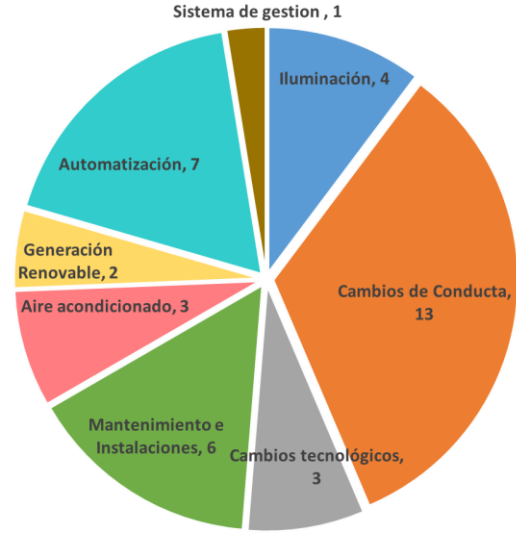


Costo relacionado a las Emisiones de Carbono derivadas del Transporte por tipo de Vehículo

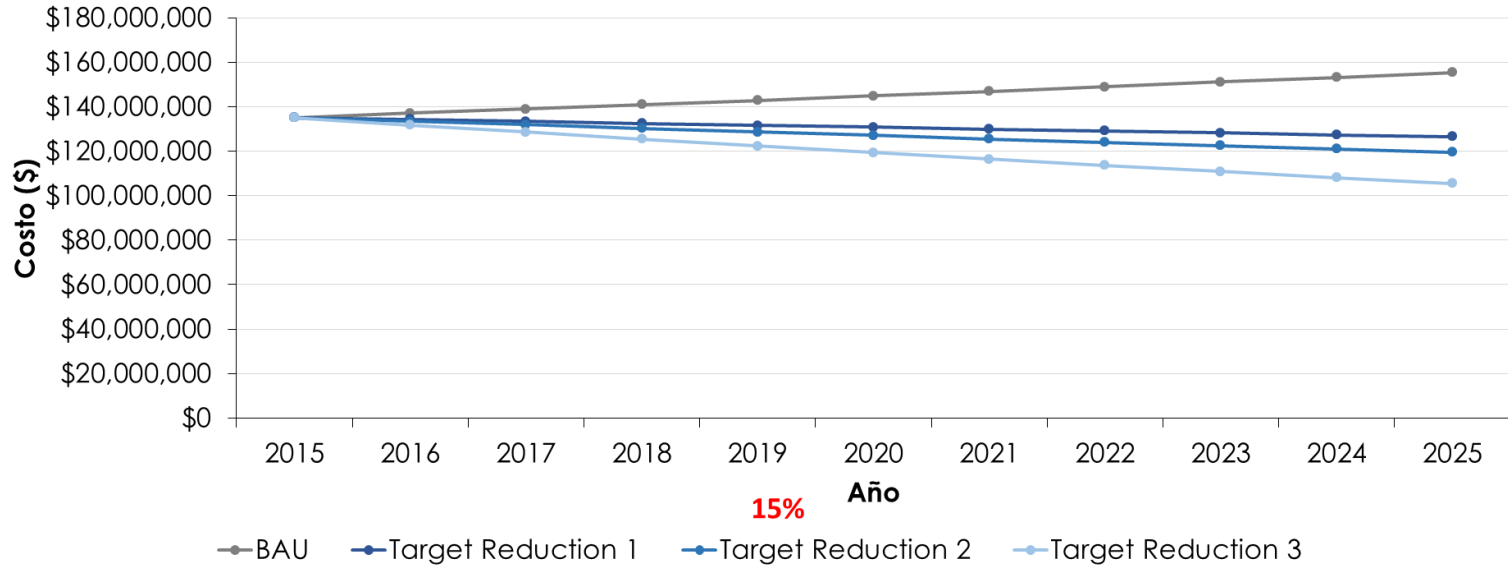


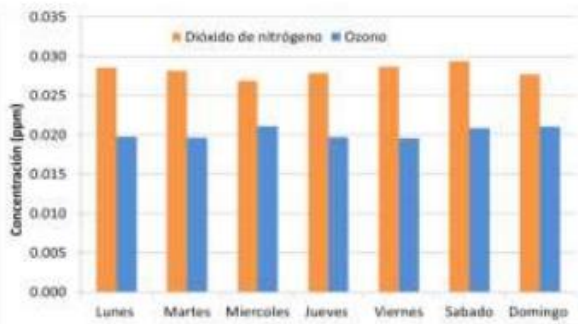
**PLAN DE GESTIÓN
DE CARBONO**
Morelos, México.

PROYECTOS IDENTIFICADOS

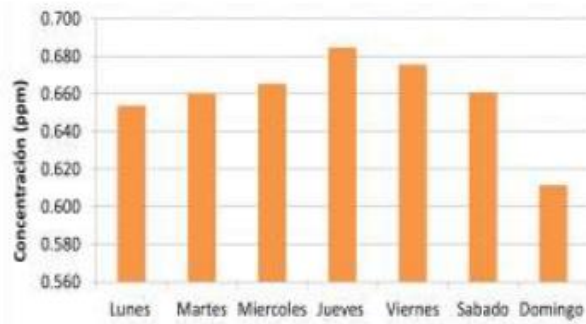


Comparación Pronosticada del Costo relacionado a las Emisiones según los Escenarios de Consumo Habitual y de Metas de Reducción

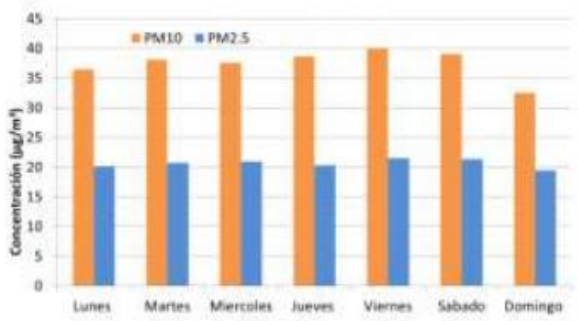




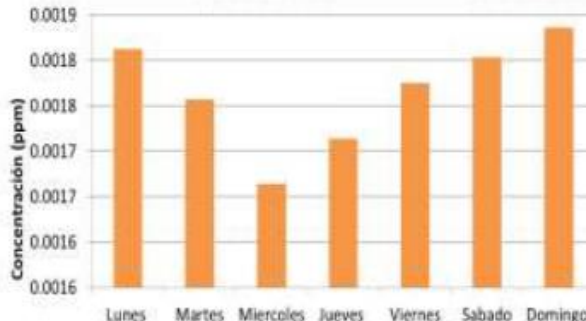
Ozono (O₃) y dióxido de nitrógeno (NO₂)



Monóxido de carbono (CO)



Partículas menores a 10 y a 2.5 micrómetros.



Dióxido de azufre (SO₂)

Figura 32. Comportamiento semanal de los contaminantes atmosféricos criterio medidos en la estación Cuernavaca, 2016. SIMAEM.



PERSONAL EXPOSURE STUDY

