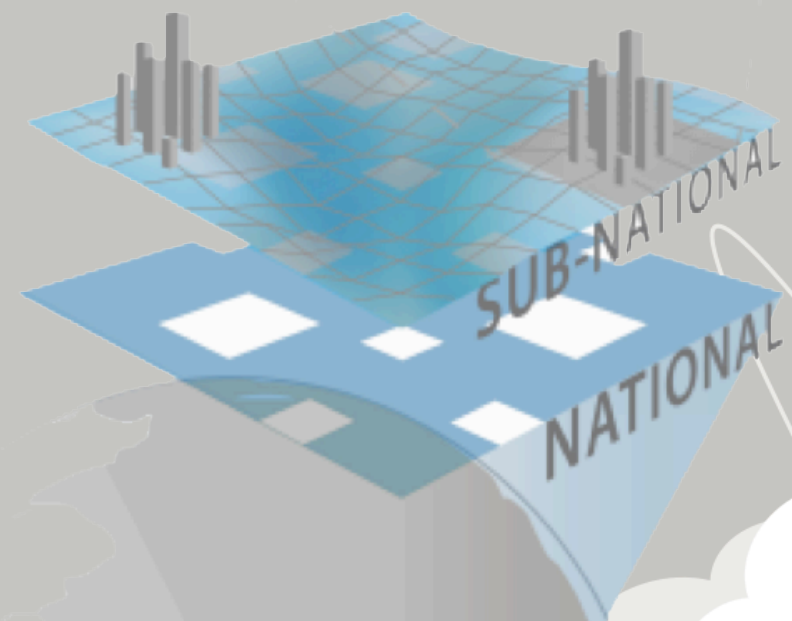
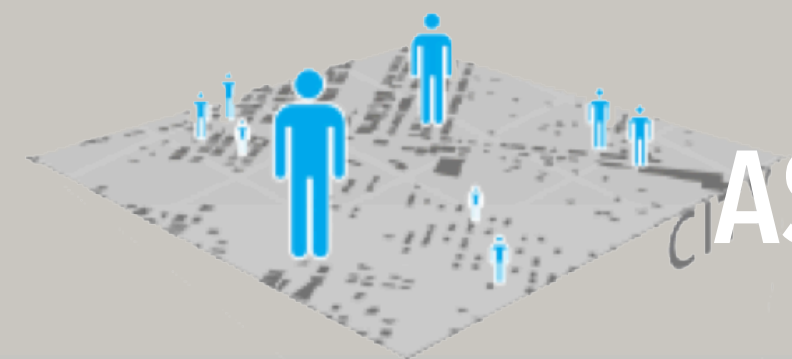


FROM LOCAL TO GLOBAL: ASSESSING CLIMATE ACTION AT ALL LEVELS

Angel Hsu, PhD
Assistant Professor
Yale-NUS College/Yale University
June 22, 2015



YALE UNIVERSITY
School of Forestry
& Environmental Studies

environment.yale.edu

Total commitments to action

2763

Use this page to explore all the commitments to action featured on NAZCA. The advanced filters below enable you to navigate commitments based on entity, timeframe, type of action, and location. Once you have chosen your advanced filter criteria, select a theme to see relevant commitments. [VIEW ALL](#)

Emissions reduction



1939

Urban environment



1056

Energy efficiency



1024

Renewable energy



640

Finance



306

Land use



95

Low emissions development



60

Resilience



59

Use of carbon price



39

Non-CO2 greenhouse gases



19

Carbon capture, use and storage



4

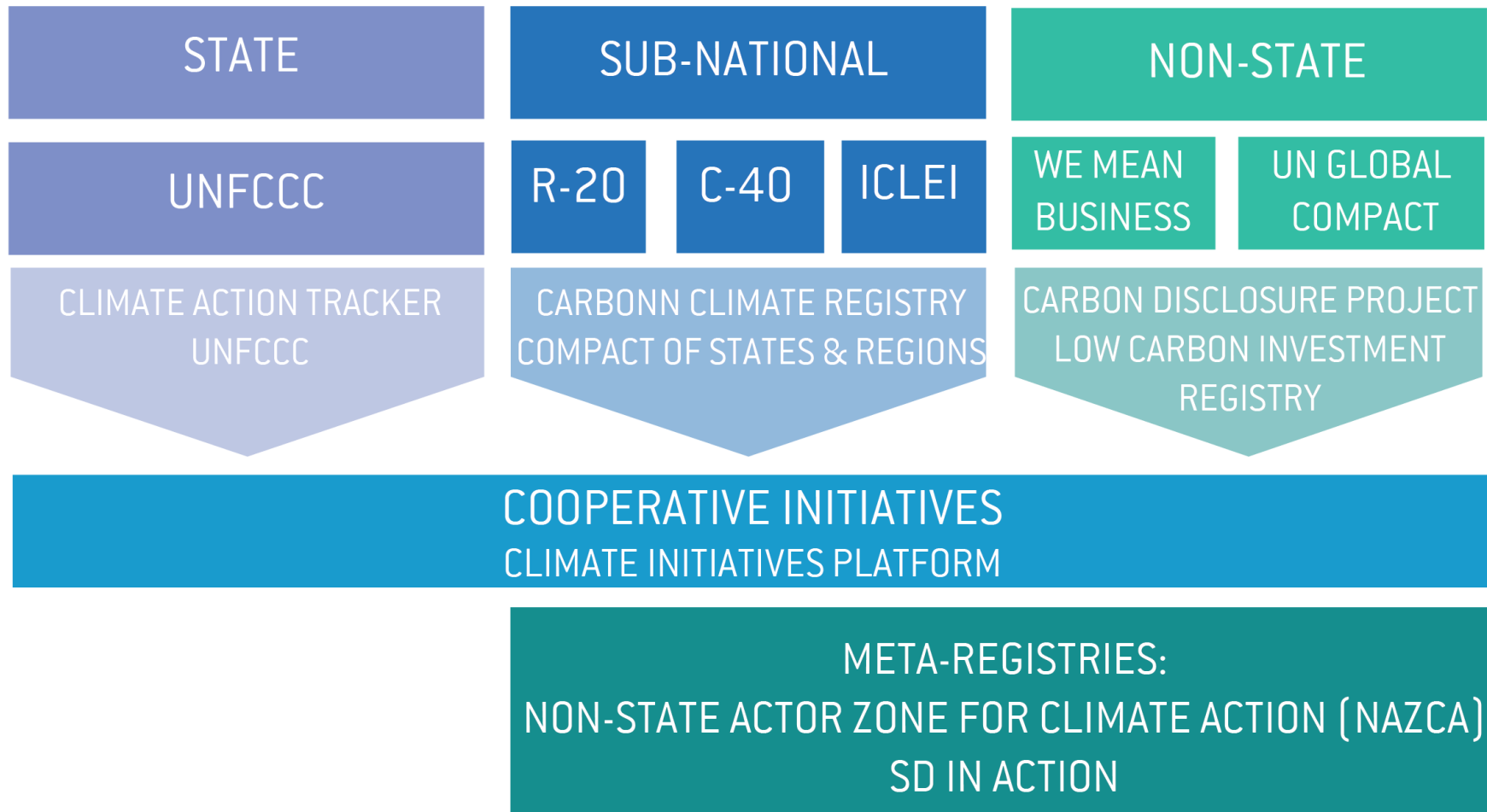
Other



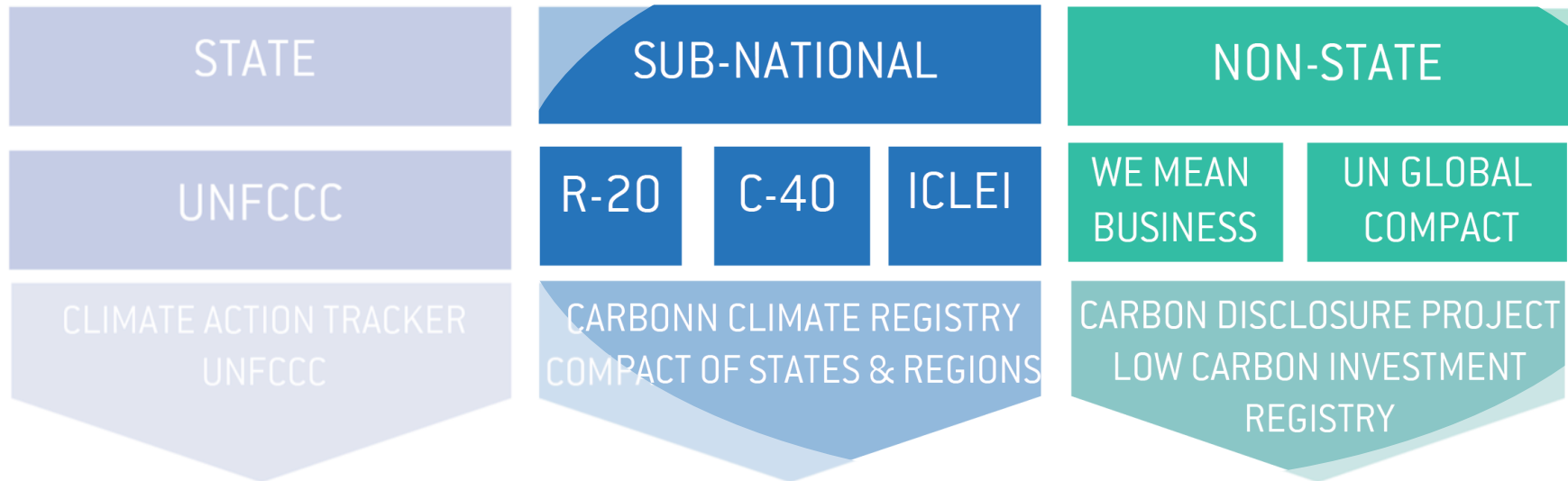
3

www.climateaction.unfccc.int

"Groundswell" of Climate Actions from New Actors



Key questions have emerged about the "Groundswell"



- How do they relate to state initiatives?
- Are they comparable?
- Do they 'measure up'?



CLIMATE SUMMIT 2014

“

I firmly believe that every one of us can step up and become leaders in combating climate change.

”



SUMMING THE SUMMIT



111

NATIONAL GOVERNMENTS

Nearly thirty commitments were made at last September's historic United Nations Climate Summit in New York. Who pledged what and how do the actions add up?

SUB-NATIONAL GOVERNMENTS

22



86 CITIES



TARGET YEARS

2015 2020

2030 2050

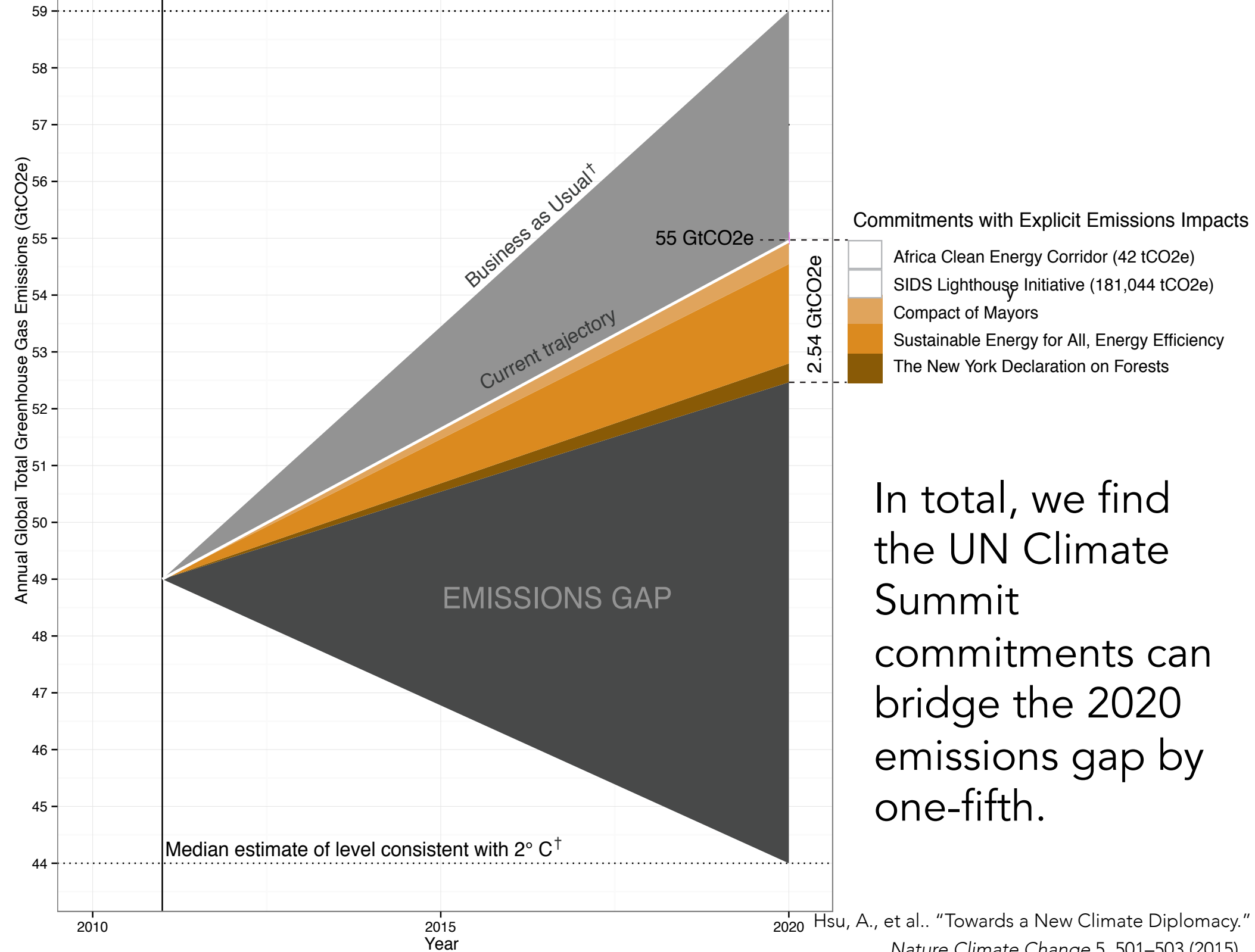
397 NGOs IGOs & CSOs



491 PRIVATE COMPANIES + INVESTORS

16

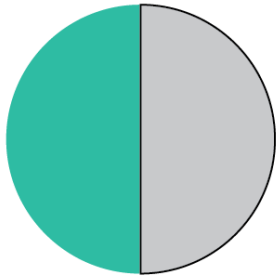
INDIGENOUS PEOPLES GROUPS



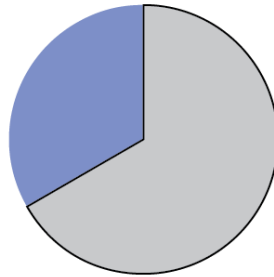
† Median estimates are based on the IPCC AR5.

Overall, commitments lack details

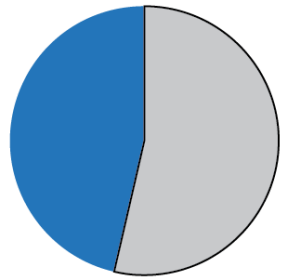
50%
SMART



1/3
SPECIFIED
MONITORING
& EVALUATION



8 OF 29
HAD EXPLICIT
EMISSIONS
INFORMATION



- Only 5 considered 'additional'
- Only 2 had explicit financial pledges

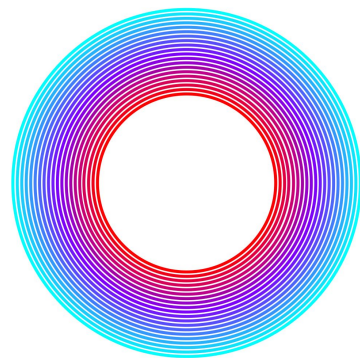
The Path to Measuring New Kinds of Climate Action



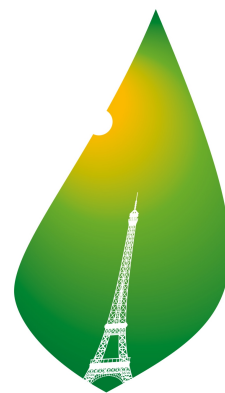
- What criteria/thresholds to set?
- How to account for additionality, overlaps?
- What to do about vertical integration?

Challenges for the Lima-Paris Action Agenda

- How to integrate actions into UNFCCC
- How to discourage 'greenwashing'
- Ensure sustainability beyond Paris



LIMA COP20 | CMP10
UN CLIMATE CHANGE CONFERENCE 2014



COP21 · CMP11
PARIS 2015
UN CLIMATE CHANGE CONFERENCE



Galvanizing
the Groundswell
of Climate Actions

THANK YOU

ANGEL.HSU@YALE.EDU

@ECOANGELHSU

//EPI.YALE.EDU

//CLIMATEGROUNDSWELL.ORG