



MINISTRY OF ENERGY AND MINERAL RESOURCES
REPUBLIC OF INDONESIA

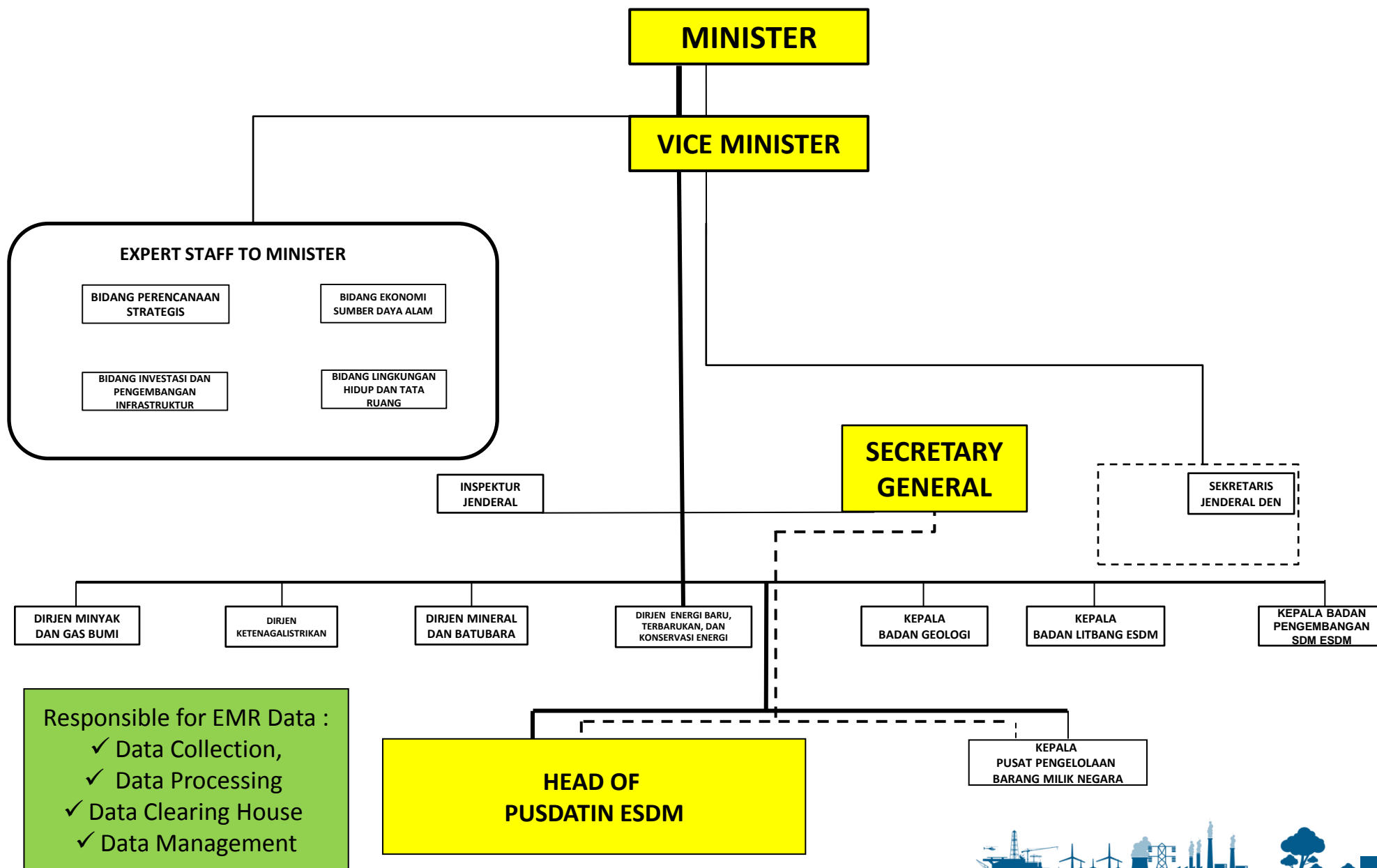
ENERGY EFFICIENCY DATA IN Indonesia

2016 InterEnerStat Workshop: Energy Efficiency and End-Use Data and Meeting of Organisations

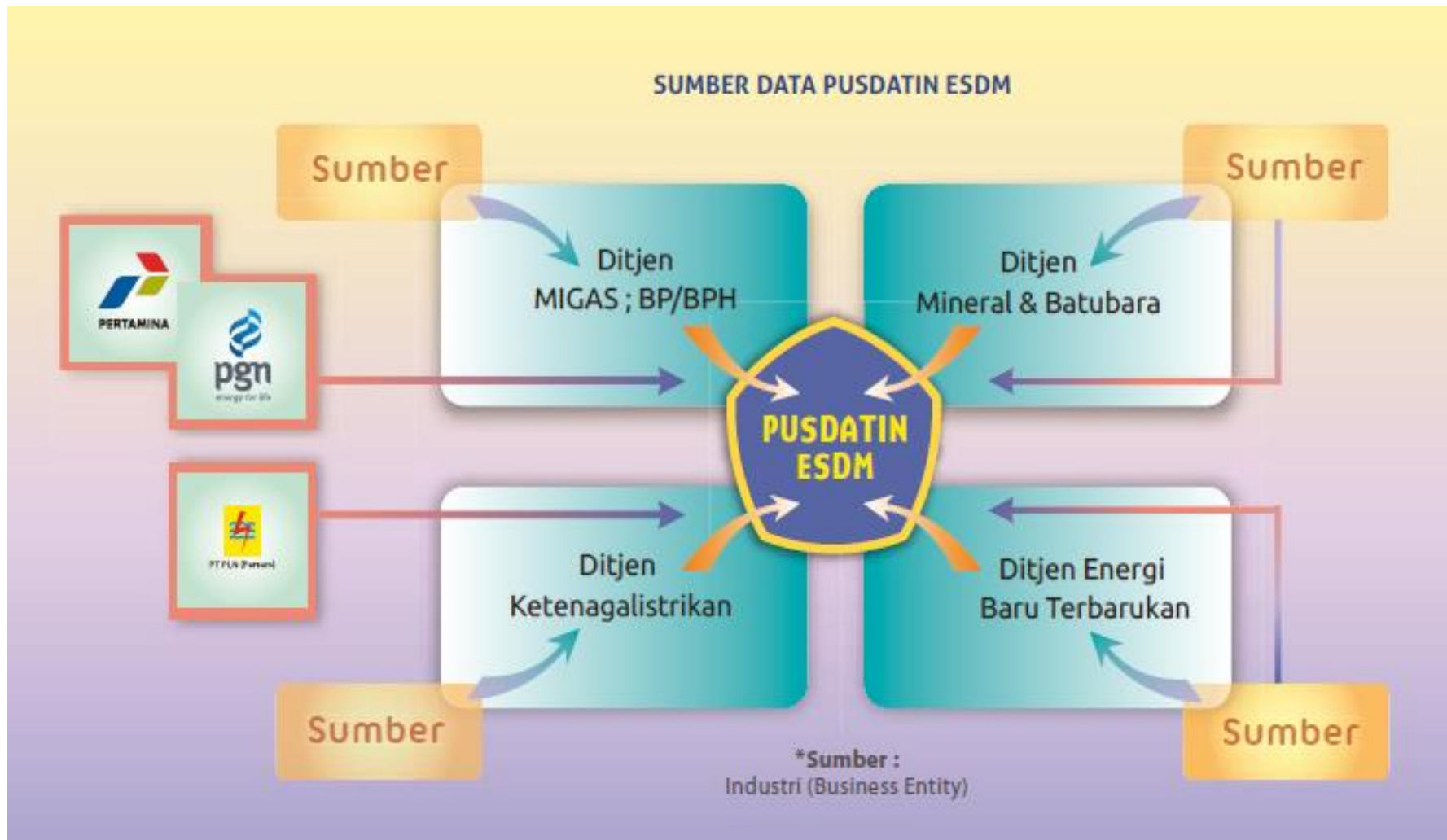
Paris, December 12th 2016



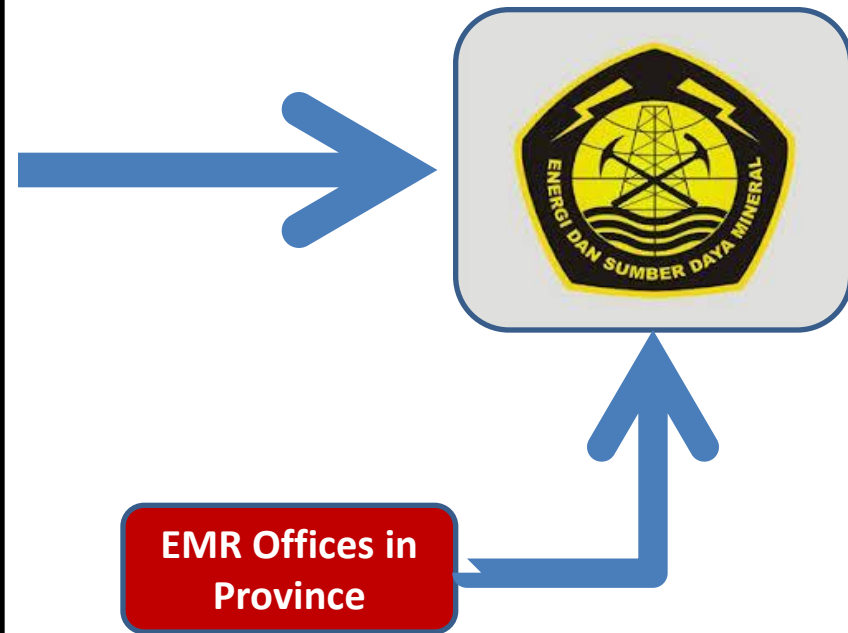
Organisational Chart of Pusdatin



Data Sources in Pusdatin (1/2)

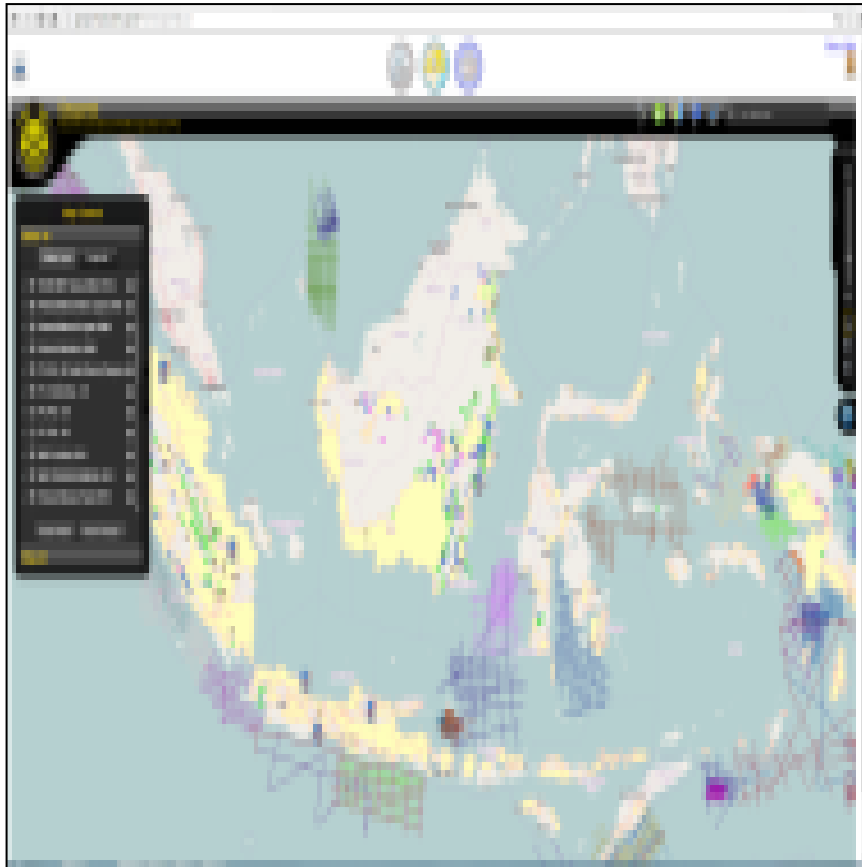


Data Sources in Pusdatin (2/2)



Product of Pusdatin

ESDM ONE MAP



HANDBOOK OF ENERGY & ECONOMY STATISTICS OF INDONESIA (HEESI)



The Challenges of Data Collection

– Legislation/Regulation

- √ Based on voluntary system, no punishment

– Data Condition

- √ No common data format on EMR sector
- √ There is still no dedicated Person in Charge (PIC) of data processing, especially in the local government of EMR offices. While in the directorate general, the data is scattered into different divisions that make data collection more difficult

– Human Resources

- √ Lack of human resources (competent PIC of data processing)

– Staff Condition

- √ Rotation or changes of PIC in units/companies who understand in data collection



Data Condition (1/2)

INDUSTRY

CURRENT

- Total energy consumption for each subsector
- Added value for each subsector
- Total production

IDEAL

- Total energy consumption for each process
- Added value for each subsector
- Production for main product (exclude side product)

COMMERCIAL

CURRENT

- Total electricity consumption

IDEAL

- Total energy consumption
- Total surface area
- Total buildings



Data Condition (2/2)

HOUSEHOLD

CURRENT

- Total electricity consumption
- Total dwellers

IDEAL

- Total energy consumption (include electricity)
- Total surface area
- Total dwellers

TRANSPORTATION

CURRENT

- Total fuel sales for each type of transport (land, water, & air)
- Total vehicles for each type of transport

IDEAL

- Total fuel sales for each type of transport (land, water, & air)
- Total vehicles for each type of transport
- Total passengers/freights for each vehicle
- Total miles for each vehicle



Way Forward to Improve Energy Efficiency Data Quality

1. Setting up the Minister Regulation that might enforce data submission from the units within the Ministry (target mid 2017)
2. Providing an online reporting platform so that the units could easily submitted their data to Pusdatin (already exist but need further training for units)
3. Aligning data availability and quality with other government institutions as the response to President Joko Widodo instruction to have Indonesia One Single Data Policy that will support the good policy decision
4. Seeking the best practices from other country or international organizations that could increase the quality of human resources and methodology in data management





Terima Kasih
Thank You
Merci

www.esdm.go.id

