

Monthly Oil and Gas Statistics

The process – Energy Data Center

**Joint Rosstat - IEA workshop on
Energy Statistics**

Moscow, Russia, 14-17 February 2012

Erica Robin

IEA Energy Data Centre



International
Energy Agency

Energy Data Center (EDC)

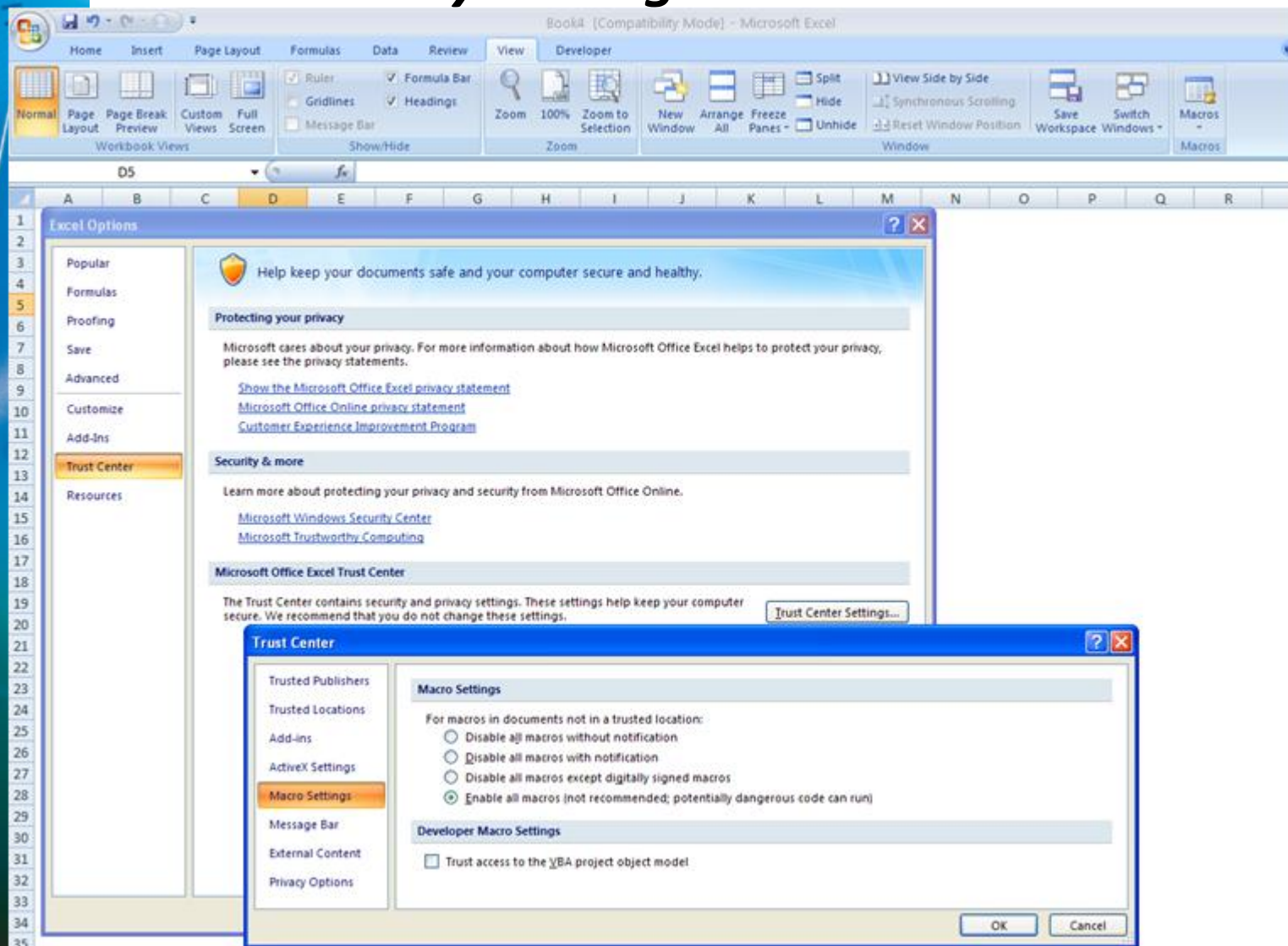
For all monthly questionnaires

■ You will need

- Internet access
- EDC Account name and password
(test ones created for exercise today)
- CSV files prepared for submission
(excel security settings must allow for macro running to create the CSV)

Energy Data Center (EDC)

Excel security settings

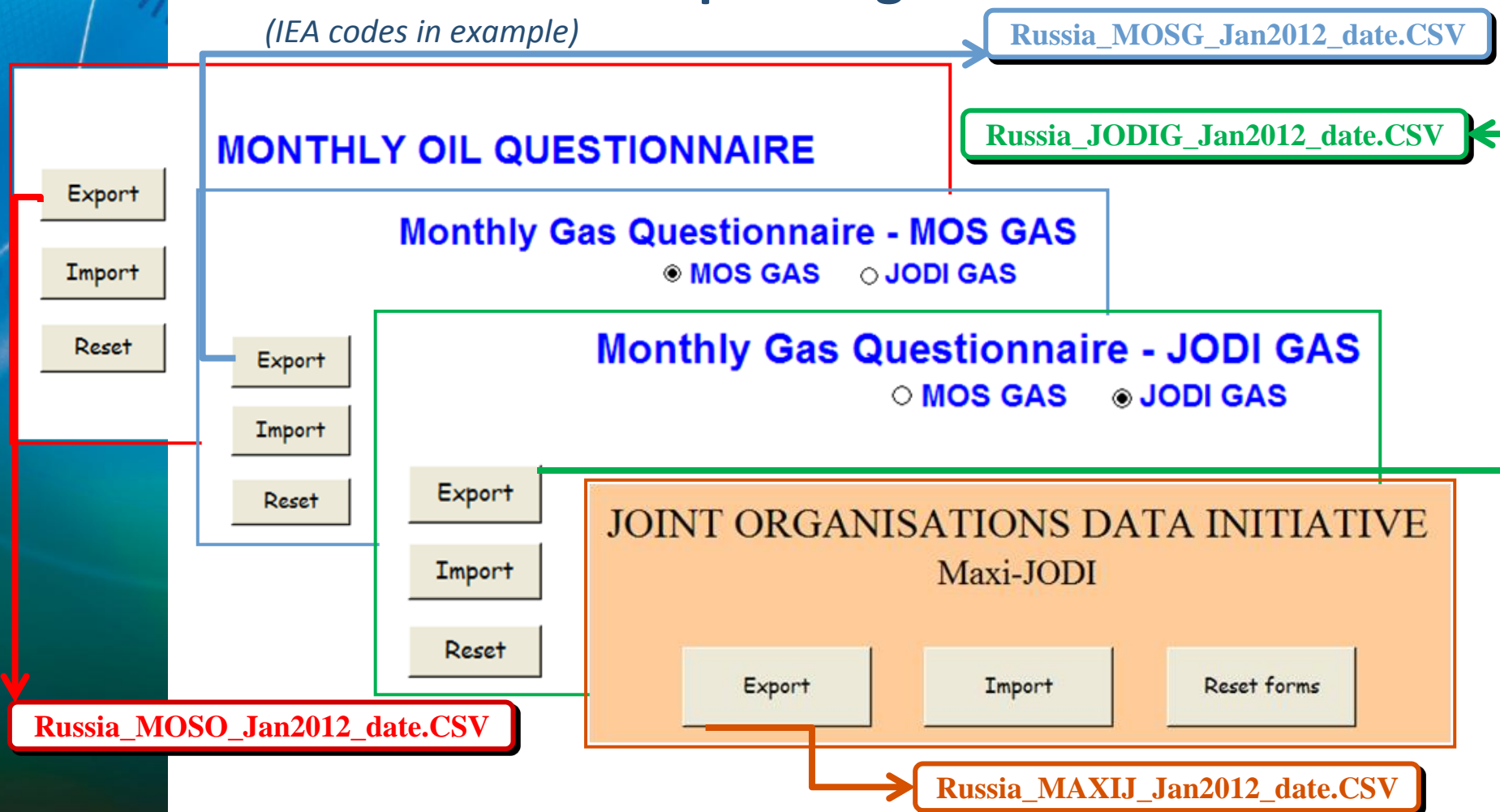


Energy Data Center (EDC)

Creating CSV files

■ Create the corresponding CSV file

(IEA codes in example)

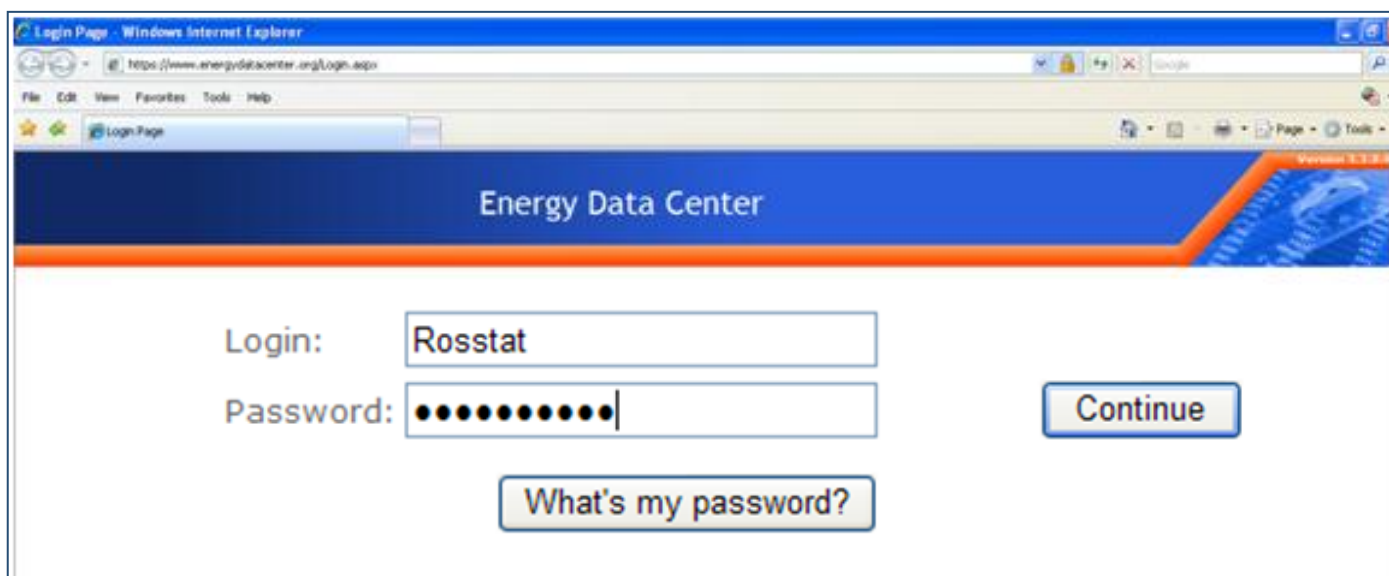


Energy Data Center (EDC)

Accessing EDC

■ <https://www.energydatacenter.org>

- Login1: Rosstat *(created for this meeting)*
- Login 2: User_Statisland *(created for this meeting)*
- Password: russiadata



To obtain an account, send us:

Name, e-mail, telephone number, for which questionnaire you are responsible

Energy Data Center (EDC)

Accessing EDC

■ Select the questionnaire family

(MOS in the example)

Energy Data Center

Home ▶

You are logged as **User Rosstat from Russia**

Click [here](#) to change your account parameters.

Questionnaires available:

Monthly

[MOS](#)

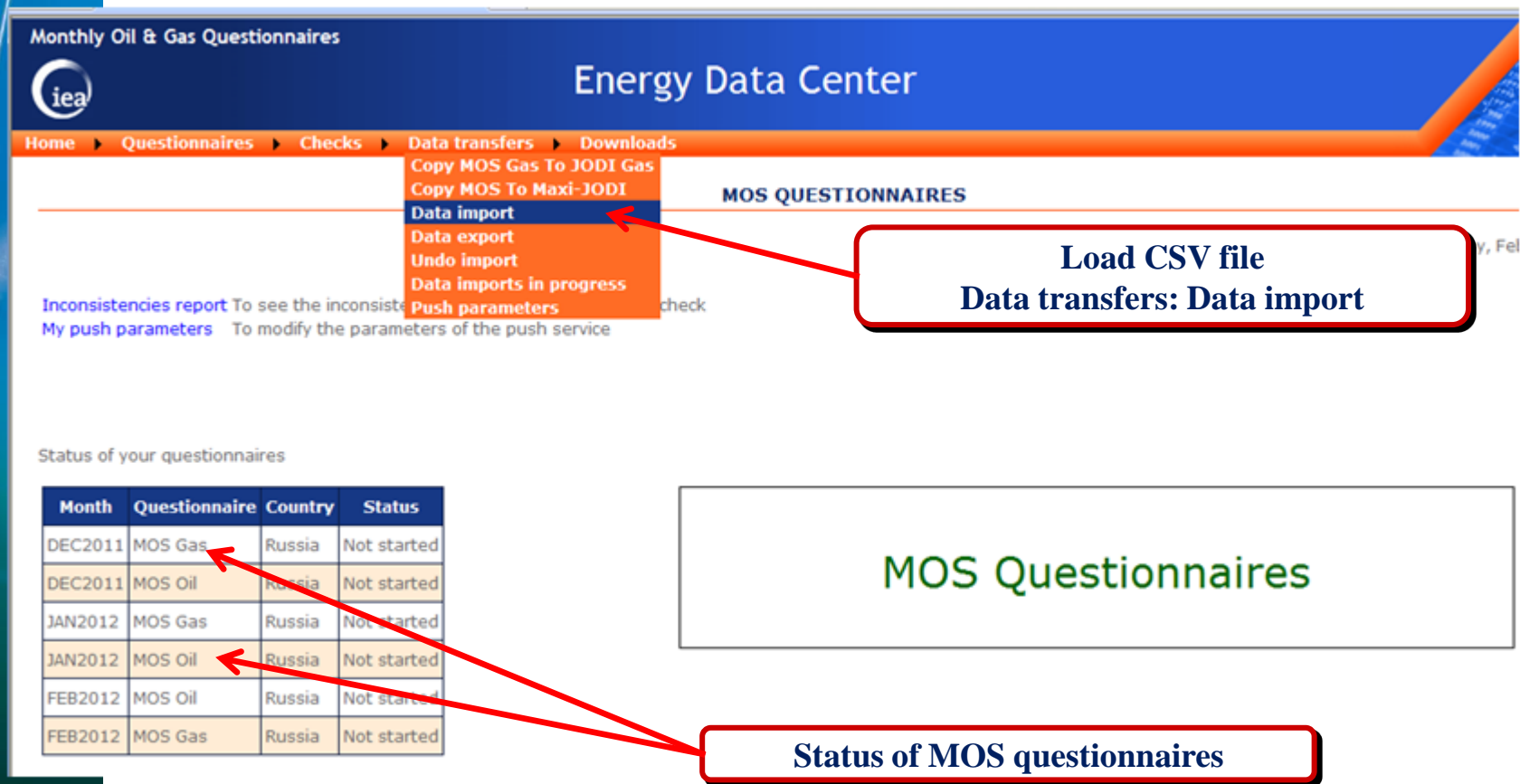
[JODI](#)

Select the questionnaire family

Energy Data Center (EDC)

Loading CSV files

- Import the CSV file *(MOS in the example)*



The screenshot shows the 'Monthly Oil & Gas Questionnaires' page of the Energy Data Center. The 'Data transfers' menu is open, highlighting 'Data import'. A red arrow points from a callout box to this option. Below the menu, there is a section titled 'Status of your questionnaires' containing a table of MOS questionnaires. Two red arrows point from a callout box to the 'MOS Gas' and 'MOS Oil' rows for December 2011 and January 2012.

Load CSV file
Data transfers: Data import

MOS Questionnaires

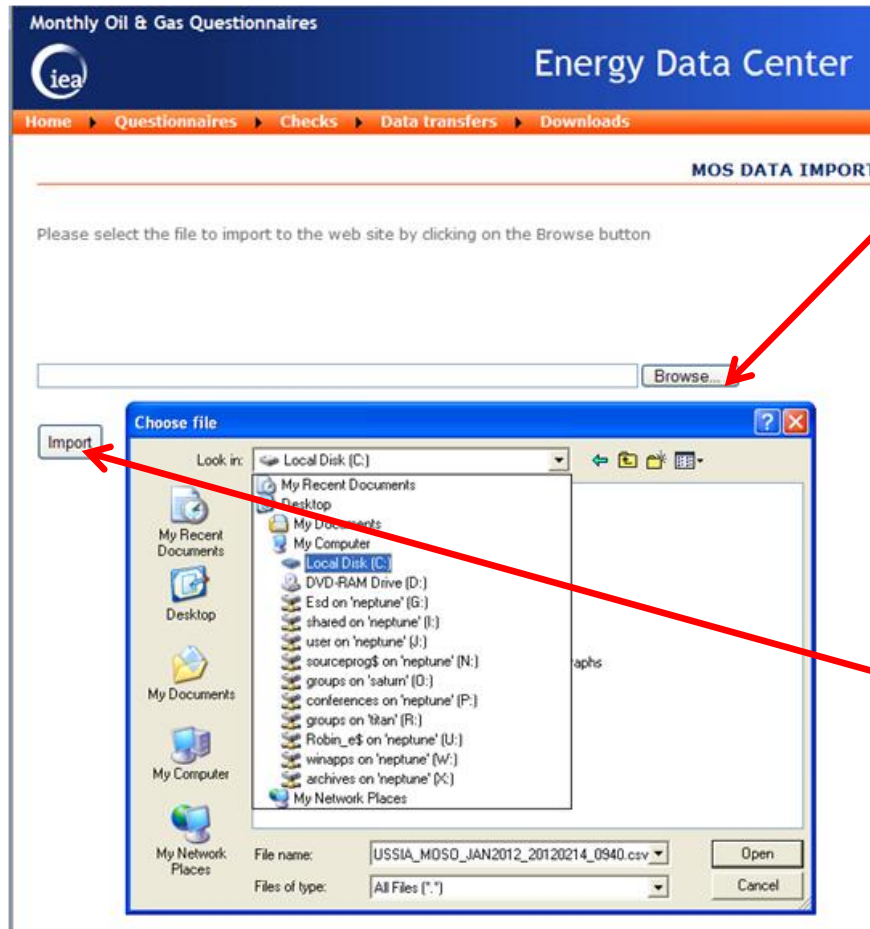
Month	Questionnaire	Country	Status
DEC2011	MOS Gas	Russia	Not started
DEC2011	MOS Oil	Russia	Not started
JAN2012	MOS Gas	Russia	Not started
JAN2012	MOS Oil	Russia	Not started
FEB2012	MOS Oil	Russia	Not started
FEB2012	MOS Gas	Russia	Not started

Status of MOS questionnaires

Energy Data Center (EDC)

Loading CSV files

■ Select the CSV file



Browse to select file

Import file

Energy Data Center (EDC)

Data consistency checks - EDC

- After file is imported, run the checks

Monthly Oil & Gas Questionnaires

Energy Data Center

Home ▶ Questionnaires ▶ Checks ▶ Data transfers ▶ Downloads

Run the checks

Inconsistencies report

MOS RUN THE CHECKS

Questionnaire: MOS Oil

Country: Russia

From: January 2012

To: January 2012

Data to check

☒ Only data modified since 14-02-2012 (DD-MM-YYYY)

☐ Only data not downloaded by IEA

☐ All data

Run the checks

Select questionnaire and time period to be checked

Run the checks

Energy Data Center (EDC)

Inconsistencies Report - EDC

■ Internal consistency checks

(Ex.: Table 1 imports vs. Table 3 imports)

■ Stock level consistency with previous months

(Ex.: Opening stocks January 2012 vs. Closing stocks December 2011)

■ Different levels of importance

Monthly Oil & Gas Questionnaires

Energy Data Center

Home Questionnaires Checks Data transfers Reports Downloads Parameters

Run the checks

Inconsistencies report

MOS INCONSISTENCIES FOUND

Questionnaire: MOS Oil Country: <All available> From: December 2011 To: December 2011

Save to file Print

Quest	Ctry	Month	#	Message	Source	Importance
MOSO	NZ	DEC2011	1313	(Table 5) Total products: Total stocks opening level - value 1 - should equal closing level for previous month - value 2 -.	Value1 = 200 Value2 = 210	High
MOSO	NZ	DEC2011	1314	(Table 5) Total oil: Total stocks opening level - value 1 - should equal closing level for previous month - value 2 -.	Value1 = 1100 Value2 = 1000	High
MOSO	AU	DEC2011	1160	(Table 2) Gross Inland Delivered Calculated: All products of gross inland deliveries calculated should be positive. The products include crude oil, NGL, refinery gas, ethane, LPG, Naphtha, motor, biogasoline, aviation gasoline, gasoline jet fuel, kerosene jet fuel, other kerosene, transport diesel, biodiesels, heating and other gasoil, gas diesel oil, low sulphur fuel oil, high sulphur fuel oil, fuel oil, petroleum coke, other products, and total products.	Value1 = -2	Medium
MOSO	CL	DEC2011	1160	(Table 2) Gross Inland Delivered Calculated: All products of gross inland deliveries calculated should be positive. The products include crude oil, NGL, refinery gas, ethane, LPG, Naphtha, motor, biogasoline, aviation gasoline, gasoline jet fuel, kerosene jet fuel, other kerosene, transport diesel, biodiesels, heating and other gasoil, gas diesel oil, low sulphur fuel oil, high sulphur fuel oil, fuel oil, petroleum coke, other products, and total products.	Value1 = -11	Medium

Levels of importance

Each line of the inconsistencies report is related to an issue and gives details to help you to solve it

Energy Data Center (EDC)

Revisions to inconsistencies – Notification

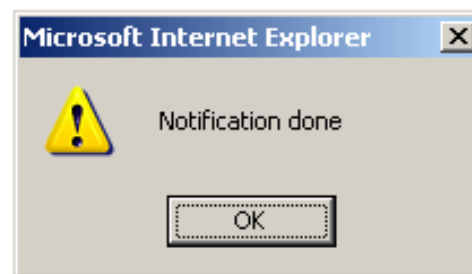
- Inconsistencies should be checked and revised:
 - In the Excel format and re-imported to EDC or
 - Directly in the EDC

■ Once inconsistencies are revised, NOTIFY

(under the heading Questionnaires, select Notify questionnaire completed)

The Notification allows the IEA to know you have finished working on the questionnaire and wish to submit the data

- Notification can be done even if inconsistencies remain





Energy Data Center (EDC)

Other Features – View Forms

- View the tables as in excel format (FORMS):

Monthly Oil & Gas Questionnaires

Energy Data Center

Home Questionnaires Checks Data transfers Reports Downloads Parameters

Notify quest. completed
MOS Oil TimeSeries
MOS Gas Forms
Remarks

Inconsistencies report To see the inconsistencies and
My push parameters To modify the parameters of the

MOS QUESTIONNAIRES

1 - Supply of primary products and other

Monthly Oil & Gas Questionnaires

Energy Data Center

Home Questionnaires Checks Data transfers Reports Downloads Parameters

Data month: December Year: 2011 Country: Russia

In yellow, modifications By: <AE> Save

Modification on behalf of the country

MOS OIL - SUPPLY OF PRIMARY PRODUCTS AND OTHER

Right click on a cell to add a comment

ALL DATA SHOULD BE ENTERED IN THOUSAND METRIC TONS WITH NO DECIMAL PLACE

Table 1: SUPPLY OF CRUDE OIL, NGL, REFINERY FEEDSTOCKS, ADDITIVES AND OTHER HYDROCARBONS

Unit: Thousand Metric Tons

	Crude Oil	NGL	Refinery Feedstocks	Additives Oxygenates	Of which Biofuels	Other Hydrocarbons	Total
	A	B	C	D	E	F	G
Indigenous Production	1						0
From Other Sources	2						0
Backfires	3						0
Products Transferred	4						0
Imports	5						0
Exports	6						0
Direct Use	7						0
Stock Change	8						0
Refinery intake (Calculated)	9	0	0	0	0	0	0
Statistical difference	10	0	0	0	0	0	0
Refinery intake Observed	11						0
Memo item: Refinery Losses	12						0

Automatic Checks:

- Backflow check: OK
- Product Transferred Check: OK
- Import Check: OK
- Export Check: OK
- Direct Use Check: OK
- Stock Change Check: OK

Energy Data Center (EDC)

Other Features – Forms (Read and Enter data)

Monthly Oil & Gas Questionnaires

Energy Data Center

Home Questionnaires Checks Data transfers Reports Downloads Parameters

Data month: December Year: 2011 Country: Russia

In yellow, modifications since: 27-01-2012 (DD-MM-YYYY) by: <All> Country

Modification on behalf of the country

MOS OIL - SUPPLY OF PRIMARY PRODUCTS AND OTHER

ALL DATA SHOULD BE ENTERED IN THOUSAND METRIC TONS WITH NO DECIMAL PLACE

Table 1: SUPPLY OF CRUDE OIL, NGL, REFINERY FEEDSTOCKS, ADDITIVES AND OTHER HYDROCARBONS

Unit: Thousand Metric Tons

	Crude Oil	NGL	Refinery Feedstocks	Additives Oxygenates	Of which Biofuels	Other Hydrocarbons	Total
	A	B	C	D	E	F	G
+ Indigenous Production	10						10
+ From Other Sources							0
+ Backflows							0
+ Products Transferred			117				117
+ Imports	1,579		27	40			1,646
- Exports	60						60
- Direct Use							0
- Stock Change	146			14			160
= Refinery Intake (Calculated)	1,383	0	144	26	0	0	1,553
- Statistical difference	-53	0	-17	-2	0	0	-72
= Refinery Intake Observed	1,436		161	28			1,625
Memo Item: Refinery Losses							0

Backflow check OK

Product Transferred Check: OK

Import Check: OK

Export Check: OK

Direct Use Check: OK

Stock Change Check: OK

Different months

Highlight modifications
(by country or by IEA)

Automatic Checks

Energy Data Center (EDC)

Other Features – Time Series (Read only)

Monthly Oil & Gas Questionnaires

Energy Data Center

Home ▶ Questionnaires ▶ Checks ▶ Data transfers ▶ Reports ▶ Downloads ▶ Parameters ▶

Ending: November < > Year: 2011 Country: Norway

Product: Natural Gas Million CM ☐ Modification on behalf of the country

In yellow, modifications

MOS GAS - SUPPLY OF NATURAL GAS

13 – month view


This time series is read-only.

Natural Gas	NOV 2010	DEC 2010	JAN 2011	FEB 2011	MAR 2011	APR 2011	MAY 2011	JUN 2011	JUL 2011	AUG 2011	SEP 2011	OCT 2011	NOV 2011
Indigenous Production	10,003	11,044	10,559	9,656	10,413	7,565	6,548	6,372	7,300	8,045	7,747	8,448	9,847
Imports													
Exports	9,356	10,279	10,257	8,814	10,200	7,261	6,447	6,148	6,978	7,656	7,139	8,134	9,530
Stock Change													
Gross Inland Deliveries (Calculated)	647	765	302	842	213	304	101	224	322	389	608	314	317
Statistical Difference	0	0	0	0	0	0	0	0	0	0	0	0	0
Gross Inland Deliveries Observed	647	765	302	842	213	304	101	224	322	389	608	314	317
Opening level of stocks held on national territory													
Closing level of stocks held on national territory													
Own use and losses of the natural gas industry	647	765	302	842	213	304	101	224	322	389	608	314	317
Deliveries to Power Generation													

Energy Data Center (EDC)

Other Features – JODI Time Series

(View of MOS values for comparability)


Joint Oil Data Initiative

Energy Data Center

[Home](#)
[Questionnaires](#)
[Checks](#)
[Data transfers](#)
[Reports](#)
[Downloads](#)
[Parameters](#)

Ending: January < > Year: 2012
Submission: M-2 Country: Australia
In yellow, ☐ modifications ☐

Product: Total Products
☐ Modification on behalf of the country

MAXI JODI - PETROLEUM PRODUCTS

This time series is read-only

Unit: *Thousand Metric Tons*

Petroleum Products	JAN 2011	FEB 2011	MAR 2011	APR 2011	MAY 2011	JUN 2011	JUL 2011	AUG 2011	SEP 2011	OCT 2011	NOV 2011	DEC 2011	JAN 2012
MOS	123	156	101	159	157	167	149	190	220	126	80	128	
- Products Transferred													
MOS													
+ Interproduct Transfers													
MOS													
- Stock Change	-24	-42	41	-34	76	27	71	76	-163	-35	38	166	
MOS	-24	-42	41	-34	76	27	71	108	-163	-35	35	166	
- Statistical Difference	202	378	364	626	235	378	357	290	553	249	411	-541	
MOS	202	357	364	626	235	378	357	258	553	250	413	-541	
= Demand	3,262	3,390	3,648	3,416	3,685	3,580	3,623	3,642	3,568	3,563	3,790	3,669	
MOS	3,262	3,400	3,648	3,416	3,685	3,580	3,623	3,642	3,568	3,562	3,791	3,669	
Closing stocks	2,590	2,548	2,589	2,555	2,631	2,658	2,729	2,805	2,674	2,639	2,677	2,840	
MOS	2,590	2,548	2,589	2,555	2,631	2,658	2,729	2,837	2,674	2,639	2,674	2,840	

Energy Data Center (EDC)

Other Features – History of changes

(Status of each data point)

ALL DATA SHOULD BE ENTERED IN THOUSAND METRIC TONS WITH NO DECIMAL PLACE

Table 1: SUPPLY OF CRUDE OIL, NGL, REFINERY FEEDSTOCKS, ADDITIVES AND OTHER HYDROCARBONS
Unit: Thousand Metric Tons

	Crude Oil	NGL	Refinery Feedstocks	Additives Oxygenates	Of which Biofuels	Other Hydrocarbons	Total
	A	B	C	D	E	F	G
+ Indigenous Production	1	217	13				230
+ From Other Sources	2						
+ Backflows	3						
+ Products Transferred	4						
+ Imports	5	379					
- Exports	6	140					
- Direct Use	7						
- Stock Change	8	15					
+ Refinery Intake (Calculated)	9	441					
- Statistical difference	10	13					
+ Refinery Intake Observed	11	428					
Memo Item: Refinery Losses	12	44					

Automatic Checks:

- Backflow check: OK
- Product Transferred Check: OK
- Import Check: OK
- Export Check: OK
- Direct Use Check: OK
- Stock Change Check: OK

Information on this value - Windows Internet Explorer

Value modifications

Modif. date	Modif. mode	Value	Source	User	Downloaded by IEA
19-Feb-2011 00:16	Official published data	140	IEA	U. usr_admin	
04-Jul-2011 03:00	Data entry	169	Country	B. Field	20-Jul-2011 12:08
10-Aug-2011 13:33	Official published data	140	IEA	R. Pospiech	
28-Sep-2011 02:57	Import	169	Country	B. Field	28-Sep-2011 17:05
10-Feb-2012 15:47	Official published data	140	IEA	F. Daniel	

Comments

Right click on data point to view history of changes

Energy Data Center (EDC)

Other Features – The download section

- Instructions
- Excel Files (empty)
- Data dictionary

Monthly Oil & Gas Questionnaires



Energy Data Center

Home ▶ Questionnaires ▶ Checks ▶ Data transfers ▶ Downloads

MOS AVAILABLE DOWNLOADS

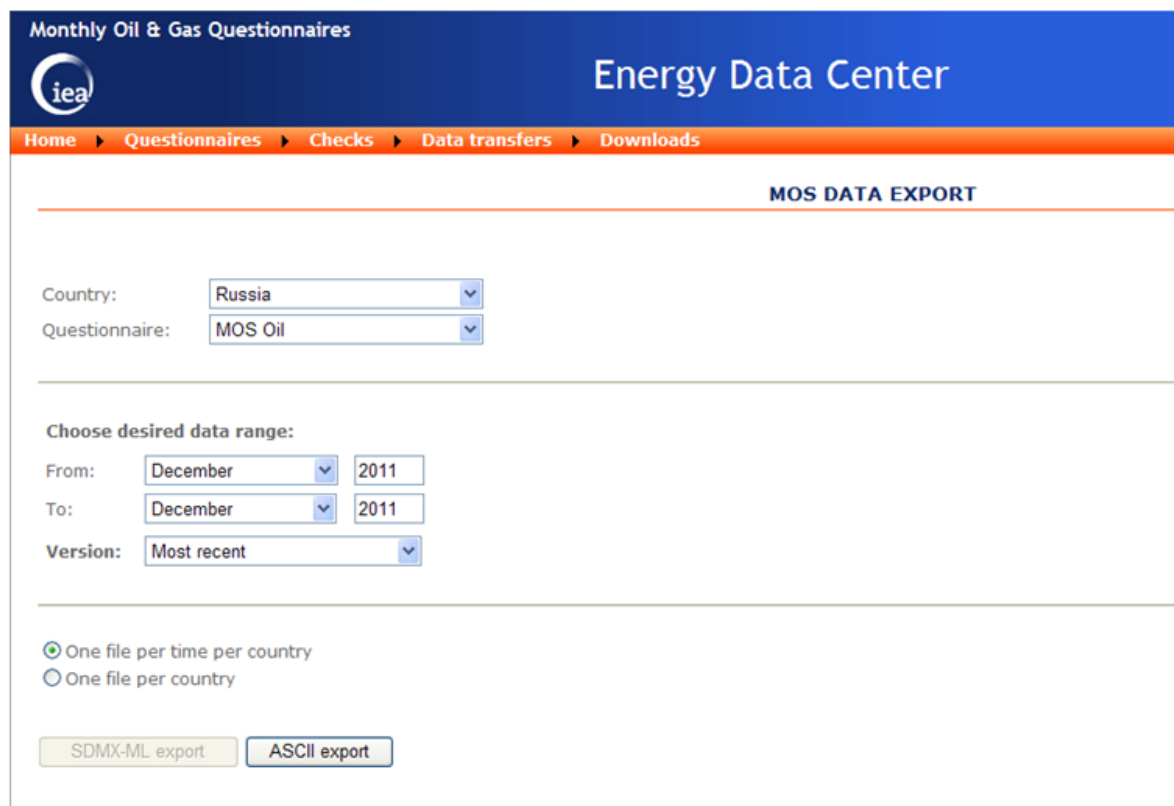
Name	Description
General Instructions MOS Oil EDC.pdf	General Instructions for MOS Oil
General Instructions MOS Gas EDC.pdf	General Instructions for MOS Gas
MOS JODI GAS.xls	MOS Gas Excel file
MOS OIL.xls	MOS Oil Excel file
MOS OIL 01o dictionnaire donnees.xls	MOS Oil Data Dictionary
MOS OIL RUSSIA.xls	MOS Oil Excel file for Russia
MOS JODI GAS RUSSIA.xls	MOS Gas Excel file for Russia

Energy Data Center (EDC)

Other Features – Data exports (in CSV format)

■ To obtain the data as in EDC

- Can be loaded into the Excel questionnaires
(Import button in summary page)



The screenshot shows the 'Monthly Oil & Gas Questionnaires' section of the Energy Data Center. The page has a blue header with the IEA logo and the text 'Energy Data Center'. Below the header is an orange navigation bar with links: Home, Questionnaires, Checks, Data transfers, and Downloads. The main content area is titled 'MOS DATA EXPORT' and contains a form for selecting data. The form includes dropdown menus for 'Country' (set to Russia) and 'Questionnaire' (set to MOS Oil). Below these are fields for 'Choose desired data range:' with 'From' and 'To' dropdowns (both set to December 2011) and a 'Version' dropdown (set to Most recent). At the bottom, there are two radio buttons: 'One file per time per country' (selected) and 'One file per country'. Finally, there are two buttons: 'SDMX-ML export' and 'ASCII export'.

Energy Data Center (EDC)

Let's practice



Thank you