

Totally Radically Cool

A new approach to DSM

Sarah Smith, FortisBC Energy Utilities

October 2013



FBC Companies



Natural Gas, Propane and Electricity



- FEU gas
 - 862,000 Residential
 - 93,000 Commercial
 - 900 Industrial
- FBC electric
 - 142,000 Residential
 - 16,500 Commercial
 - 50 Industrial
 - 4,000 Other

Current Policy Environment

2007

- BC Energy Plan
- *Greenhouse Gas Reductions Targets Act*

33% below 2007 level by 2020

80% below 2007 level by 2050

- *BC Climate Action Charter*

Carbon neutral government by 2012

- *Carbon Tax Act*

\$30 per tonne as of July 1, 2012

- *Clean Energy Act*

- Amendments to the *Utilities Commission Act*

- DSM Regulation

2012

- New Natural Gas Strategy



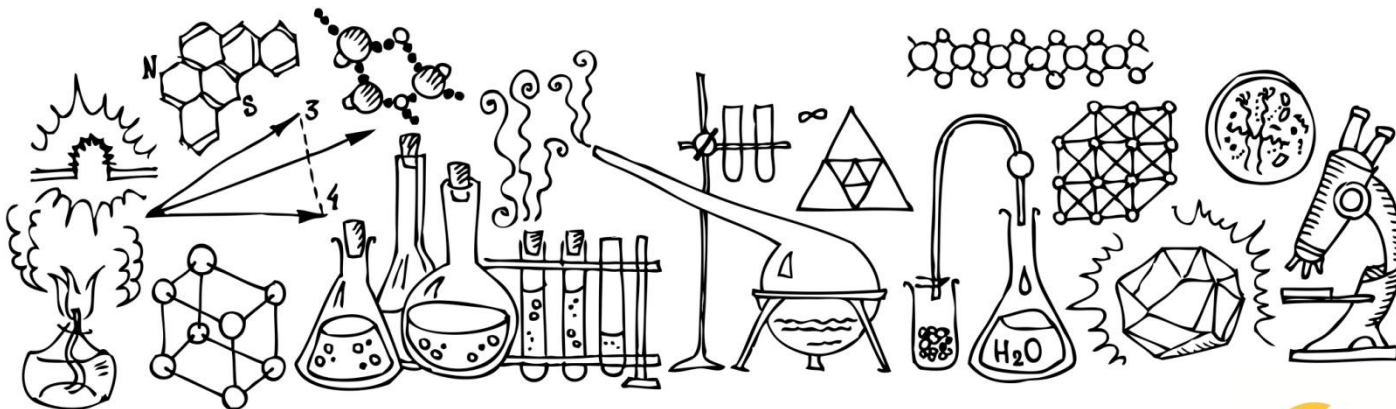
Operating Environment



Societal Cost Test



- 3% discount rate
- 30% deemed adder for NEBs
- Ceiling price of biomethane – about \$16/GJ



MTRC

- ZEEA
- 15% NEBs adder
- 33% of gas portfolio; 10% of electric



Back in Business!



Program Name	Budget (\$'000's)		%age of total budget		Benefit/Cost Ratios			
	2012	2013	2012	2013	TRC	MTRC	UCT	SCT
ENERGY STAR® DHW	1,786	1,786	6.01%	4.93%	0.50	1.13	1.23	1.27
ENERGY STAR® Washers	525	525	1.77%	1.45%	0.94	2.03	4.44	2.25
Behaviour Tool	500	1,050	1.68%	2.90%	0.69	1.67	0.69	1.58
EGH 80/EE Appliances NC	945	945	3.18%	2.61%	0.45	1.01	1.89	1.20
ECAP	4,450	4,450	14.98%	12.29%	0.38	0.75	0.28	0.71
Catalytic Radiant Burner	53	313	n/a	n/a	0.79	1.78	1.36	1.89
Furnace Scrap-It	2,000	2,000	3.10%	5.52%	0.59	0.95	0.82	1.25
TOTAL	10,258	11,068	34.53%	30.57%	0.39	1.31	2.49	1.29

Economic Impacts of EEC activity

- per \$1 million invested in EEC activity by 2031
 - 10 additional jobs created
 - Output about \$1.3 million
 - GDP change about \$0.5 million
- Significant commercial and manufacturing impact
 - Eg large pulp and paper customer 77,000 GJs/annum



Sarah Smith
604-592-7528
sarah.smith2@fortisbc.com