

Managing GHG Emissions in Indonesia's Mining Sector

Balai Besar Pengujian Mineral dan Batubara *tekMIRA*
Direktorat Jenderal Mineral dan Batubara

Jakarta, 21 Januari 2026



Foto: Miftahurrahman
Laman Foto Perambangan
Untuk Indonesia 2022



minerba.esdm.go.id



[ditjenminerba](https://www.instagram.com/ditjenminerba)



Direktorat Jenderal
Mineral dan Batubara



[humasminerba](https://twitter.com/humasminerba)



Ditjen Minerba TV

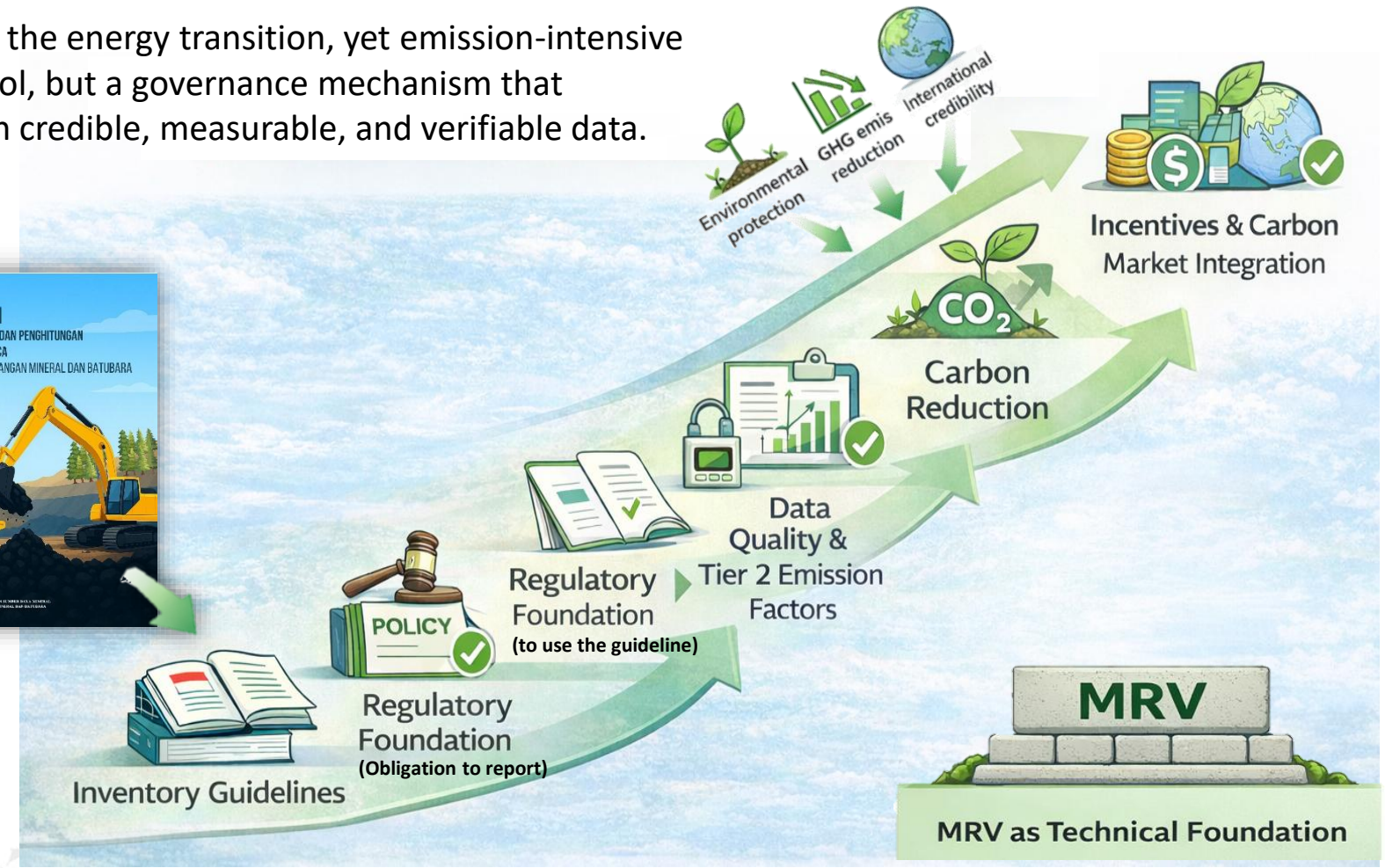
Strengthening MRV for Mining Sector

From Environmental Protection to GHG Emission Reduction

- ❑ Mining of coal and minerals is strategic for the energy transition, yet emission-intensive
- ❑ MRV is not merely a technical reporting tool, but a governance mechanism that ensures mitigation policies are grounded in credible, measurable, and verifiable data.

Current Situation


- **Fugitive emissions and fuel use** account for **over 60%** of mining emissions.
- **No mandatory GHG Reporting** for Mining Sector
- Lack of **Standardized Guidelines**
- MEMR Reg 22/2019
→ Fugitive Emission Only
→ Tier 1 (IPCC default)



Terima Kasih

 minerba.esdm.go.id

 [ditjenminerba](https://www.instagram.com/ditjenminerba)

 Direktorat Jenderal
Mineral dan Batubara

 [humasminerba](https://twitter.com/humasminerba)

 [Ditjen Minerba TV](https://www.youtube.com/DitjenMinerbaTV)



Foto: Muhammad Fauzan Azhar
Lomba Foto Pertambangan
Untuk Indonesia 2023